



Product Catalogue

Agriculture, Construction, Automobile Industry Machinery Parts



ABOUT US

'RS Industries is a B2B machinery parts manufacturing company established in 1999. What started as manufacturing of basic machinery components for different companies has now been surmounted as a well-experienced and skilled OEM (original equipment manufacturer) manufacturing and solution provider company.

We deal with various machinery parts in the agriculture, construction, and automobile industries. We aim to bring our clients the best quality products at the best prices in the quickest time possible.'





SPARE

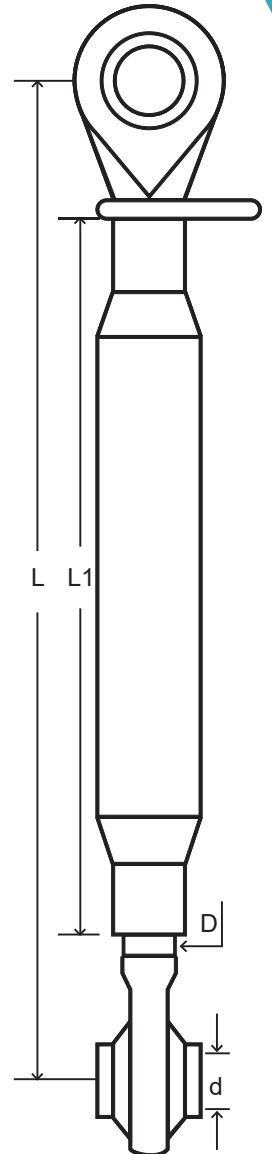


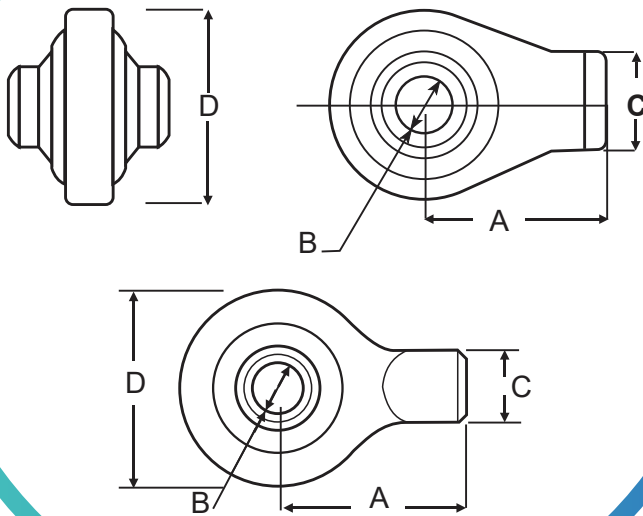
PARTS



Top Links (with Forged Ends)

Part no	Cat	Dinch/mm	Dinch/mm	L1 inch/mm	L.min inch/mm	L.mam inch/mm
RS100	0	5/8"	3/4"	7-1/2"	10-3/4"	16-3/8"
RS101	0	5/8"	3/4"	9-1/2"	12-3/4"	18*3/8"
RS102	1	3/4"	1-1/8"	13"	17-1/2"	26"
RS103	1	3/4"	1-1/8"	16"	20-1/2"	29"
RS104	1	3/4"	1-1/8"	20"	24-1/2"	33"
RS105	2	1"	1-1/8"	13"	18"	27-3/4"
RS106	2	1"	1-1/8"	16"	21"	33"
RS107	2	1"	1-1/8"	20"	25"	37"
RS108	1&2	3/4"x1"	1-1/8"	16"	17-3/4"	28"
RS109	1&2	3/4"x1"	1-1/8"	20"	20-3/4"	31"
RS110	1&2	3/4"x1"	1-1/8"	15"	24-3/4"	35"
RS111	2	1"	1-1/4"	19"	20-1/2"	31-1/2"
RS112	2	1"	1-1/4"	19"	24-1/2"	35-1/2"
RS113	3	1-1/4"	1-3/8"	230	24-1/2"	36-1/2"
RS1001	1	19	22x2.5	300	330	490
RS1002	1	19	22x2.5	320	400	560
RS1003	1	19	22x2.5	370	430	570
RS1004	1	19	22x2.5	370	480	620
RS1005	1	19	27x3	370	480	690
RS1006	1	19	27x3	430	540	750
RS1007	1	19	27x3	470	580	790
RS1008	1	19	27x3	570	680	890
RS1009	1&2	19/25.4	27x3	360	480	680
RS1010	1&2	19/25.4	27x3	470	585	810
RS1011	2	25.4	27x3	320	460	680
RS1012	2	25.4	27x3	430	550	780
RS1013	2	25.4	27x3	500	620	850
RS1014	2	25.4	30x3	460	580	830
RS1015	2	25.4	30x3	520	640	890
RS1016	2	25.4	30x3	560	680	930
RS1017	2	25.4	30x3	610	730	980
RS1018	2	25.4	30x3	400	525	760
RS1019	2	25.4	30x3	580	705	920



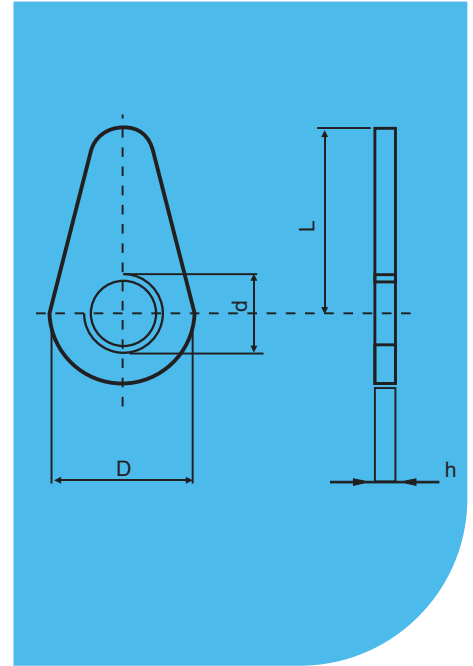


Top Link Weld On Ends (Forged)

Part No.	Cat	A Inch/mm	B Inch/mm	C Inch/mm	D Inch/mm
RS171	1	2"	3/4"	1-1/8"	2-1/4"
RS172	2	2-3/8"	1"	1-1/8"	2-5/8"
RS1396	1	48	19	25	53
RS1397	1	60	19	34	62
RS1398	2	73	25.4	30	72
RS1399	2	70	25.4	50	80
RS1400	3	70	32.1	50	80

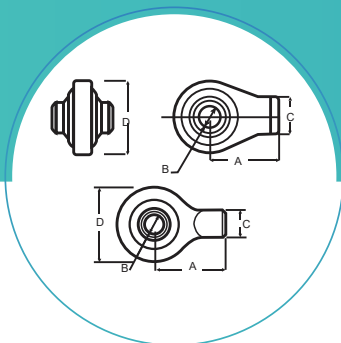
Top Link Lock Washers

Part No.	Cat	Thread Inch/mm	D Inch/mm	H Inch/mm	L Inch/mm
RS126	0	3/4"	-	-	-
RS127	1	1-1/8"	1-5/8"	1/4"	3"
RS128	2	1-1/4"	1-3/4"	1/4"	3-3/8"
RS1130	1	22X2.5	40	6	60
RS1131	1	24X2.5	40	6	60
RS1132	1	27X3	40	6	60
RS1133	2	30X3	40	6	60
RS1134	2	30X3.5	40	6	60
RS1135	3	36X3	60	10	88
RS1136	2	40X3	60	10	88



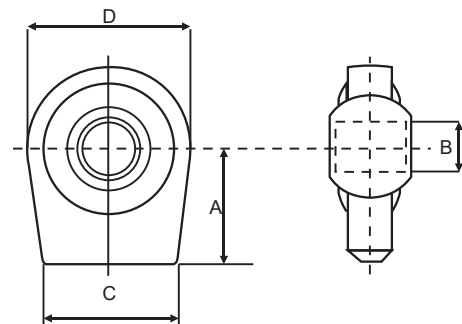
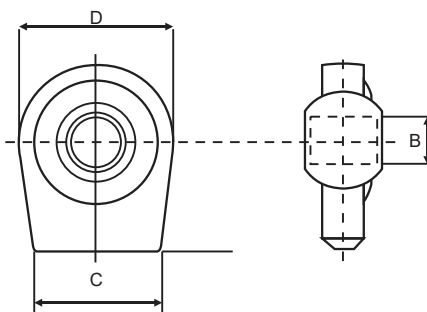
Top Link Weld On Ends (Forged)

Part No.	Cat	A Inch/mm	B Inch/mm	C Inch/mm	D Inch/mm
RS171	1	2"	3/4"	1-1/8"	2-1/4"
RS172	2	2-3/8"	1"	1-1/8"	2-5/8"
RS1396	1	48	19	25	53
RS1397	1	60	19	34	62
RS1398	2	73	25.4	30	72
RS1399	2	70	25.4	50	80
RS1400	3	70	32.1	50	80



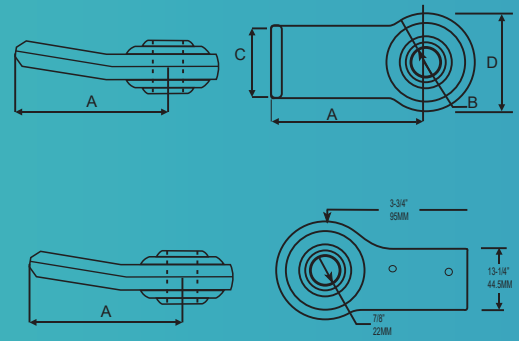
Lower Link Weld on Ends (Forged)

Part No.	Cat	A Inch/mm	B Inch/mm	C Inch/mm	D Inch/mm
RS173	1	2-3/4"	7/8"	2-3/8"	2-3/4"
RS174	2	3-1/8"	1-1/8"	2-3/4"	3-1/8"
RS175	3	3-3/8"	1-7/16"	3"	3-3/8"
RS1378	1	50	19.3	56	67
RS1379	1	50	22.1	56	67
RS1380	1	75	22.1	58	67
RS1381	1 & 2	80	22.1/28.4	70	80
RS1382	2	80	28.4	70	80
RS1383	2	80	28.4	70	80
RS1384	-	60	14	30	46
RS1385	-	60	16	30	46
RS1386	1	40	19.3	50	65
RS1387	1	40	22.1	50	65
RS1388	1	75	22.1	58	67
RS1389	2	80	25.4	70	80
RS1390	2	50	28.4	70	76
RS1391	2	80	28.4	70	80
RS1392	2	80	28.4	70	80
RS1393	1 & 2	80	22.1/28.4	70	80
RS1394	2	65	28.4	80	108
RS1395	3	65	37	80	108

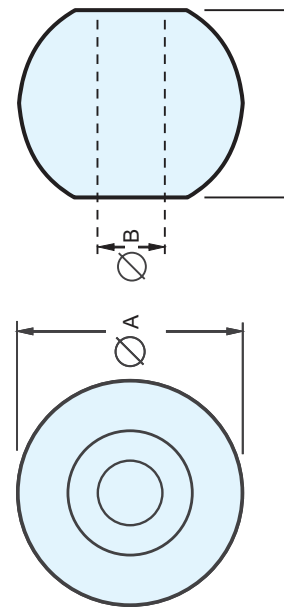


LOWER LINK WELD ON ENDS (BENT)

Part No.	Cat	A Inch/mm	B Inch/mm	C Inch/mm	D Inch/mm
RS176	1	4"	7/8"	1-7/8"	2-5/8"
RS177	2	4"	1-1/8"	1-7/8"	3-1/8"
RS176a	1 LH	3-3/4"	7/8"	1-3/4"	2-5/8"
RS177a	1 RH	3-3/4"	7/8"	1-3/4"	2-5/8"

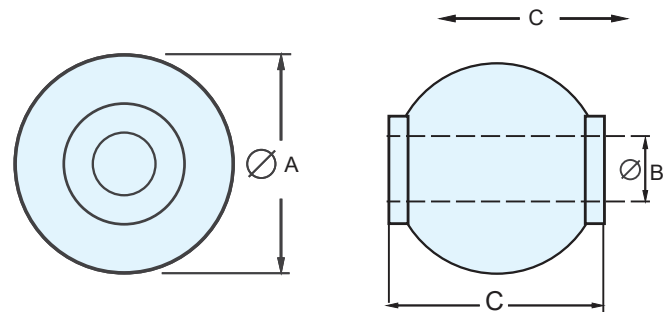


Part No.	Cat	A Inch/mm	B Inch/mm	C Inch/mm
RS250	1	2-1/4"	7/8"	1-3/8"
RS251	2	2-1/4"	1-1/8"	1-3/4"
RS252	2	2-1/4"	1-1/8"	1-3/8"
RS253	1	2"	3/4"	1-3/4"
RS254	2	2"	1"	1-3/4"
RS255	2	2"	1-1/8"	1-3/4"
RS256	1	1-13/16"	3/4"	1-3/8"
RS1460	2	50	25.4	51
RS1461	2	54	25.4	51
RS1462	2	60	25.4	51
RS1463	3	60	32.4	51
RS1464	2	64	28.4	45
RS1465	3	64	37	45
RS1466	1	38	19	44
RS1467	1	42	19	44
RS1468	1	42	20	44
RSA1469	3	54	32	51
RS1470	3	54	30	55
RS1471	2	58	28.4	35
RS1472	2	58	28.4	45
RS1473	2	62	28	45
RS1474	2	62	25.4	51

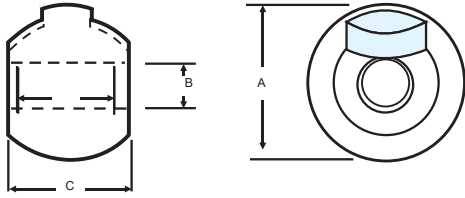


REPLACEMENT BALLS

Part No.	Cat	A Inch/mm	B Inch/mm	C Inch/mm
RS1475	3	62	32	51
RS1476	2	64	28.4	72
RS1477	3	64	37	72

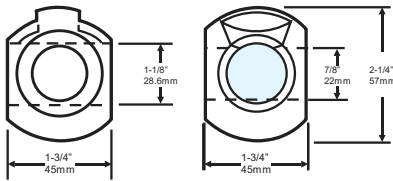


REPLACEMENT BALLS



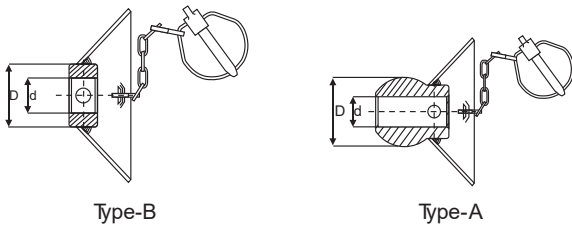
Lower Link Swivel Balls

Part No.	Cat	A Inch/mm	B Inch/mm	C Inch/mm
RS1478	1	2-1/4"	7/8"	1-3/8"
RS1479	2	2-1/4"	1-1/8"	1-3/4"



Lower Link Dual Category Swivel Balls

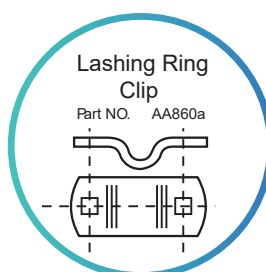
Part No.	Cat	O.D.	ID	Length
RS1480	1 & 2	2-1/4"	7/8" & 1-1/8"	1-3/4"



Lower Automatic Hitch Balls Complete

Part No.	D	d	Type
RS1481	56	22	A
RS1482	56	28.4	A
RS1483	56	38	A
RS1484	64	28.4	A
RS1485	64	37	A
RS1486	47	28.4	B

ENGINEERING COMPONENTS



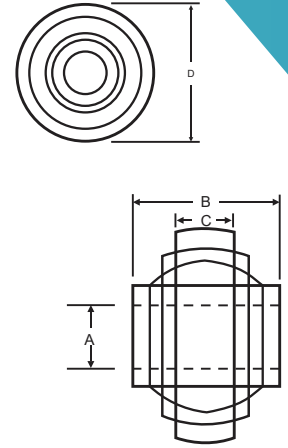
DOUBLE END BALL SOCKET

Part No.	Cat	Pin Hole	Center
RS197	1	7/8"	4-7/16"



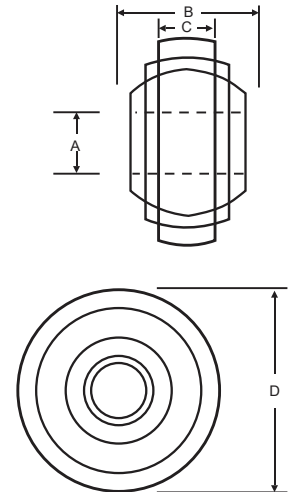
TOP LINK BALL SOCKETS

Part No. Unplated/Plated	Cat	Description	A Inch/mm	B Inch/mm	C Inch/mm	D Inch/mm
RS178 RS178Z	0	Standard	5/8"	1"	3/4"	2"
RS179 RS179Z	1	Standard	3/4"	1-5/8"	3/4"	2"
RS180 RS180Z	1	Heavy	3/4"	1-5/8"	7/8"	2-1/8"
RS181 RS181Z	1	ExtraHeavy	3/4"	1-3/8"	7/8"	2-3/8"
RS182 RS182Z	1 & 2	Standard	3/4" & 1"	1-1/2" & 1-1/4"	7/8"	2-3/8"
RS183 RS183Z	2	Standard	1"	1-3/4"	7/8"	2-3/8"
RS184 RS184Z	2	Standard	1"	1-1/4"	7/8"	2-3/8"
RS185 RS185Z	2	Heavy Duty	1"	1-3/4"	1-3/16"	2-3/4"
RS186 RS186Z	2	Standard	1"	1-3/32"	7/8"	2-3/8"
RS187 RS187Z	3	Standard	1-1/4"	1-3/4"	1-9/32"	3-1/8"



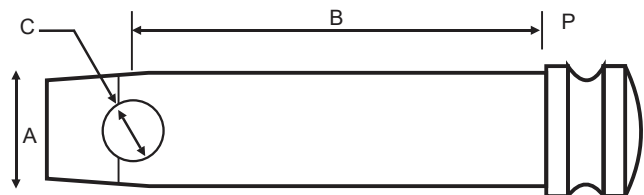
LIFT ARM BALL SOCKETS

Part No. Unplated	Plated	Cat	Description	A Inch/mm	B Inch/mm	C Inch/mm	D Inch/mm
RS188	RS188Z	0	Standard	5/8"	1"	3/4"	2"
RS189	RS189Z	1	Standard	7/8"	1-3/8"	7/8"	2-3/8"
RS190	RS190Z	1	Extra Heavy	7/8"	1-3/8"	7/8"	2-3/4"
RS191	RS191Z	1 & 2	Heavy	7/8" & 1-1/8"	1-3/4" both	1-3/16"	2-3/4"
RS192	RS192Z	1 & 2	Extra Heavy	7/8" & 1-1/8"	1-3/4" both	1-3/8"	3-1/8"
RS193	RS193Z	2	Standard	1-1/8"	1-5/16"	1-7/8"	2-3/8"
RS194	RS194Z	2	Heavy	1-1/8"	1-3/4"	1-1/4"	2-3/4"
RS195	RS195Z	2	Extra Heavy	1-1/8"	1-3/4"	1-3/8"	3-1/8"
RS196	RS196Z	3	Standard	1-7/16"	1-3/4"	1-11/32"	3-1/2"



Part No.	Cat	(A) Dia Inch/mm	(B) Usable Inch/mm	(C) Hole Inch/mm
RS275	0	5/8"	2-3/4"	15/32
RS276	1	3/4"	2-3/4"	15/32
RS277	1	3/4"	3-7/8"	15/32
RS278	1	3/4"	4-3/4"	15/32
RS279	2	1"	3-1/4"	15/32
RS280	2	1"	3-9/16"	15/32
RS281	2	1"	4-5/16"	15/32
RS282	2	1"	4-9/16"	15/32
RS283	2	1"	5-5/16"	15/32
RS284	3	1-1/4"	4-7/16"	15/32

Machined from carbon steel, Zinc Plated.



TOP LINK PINS

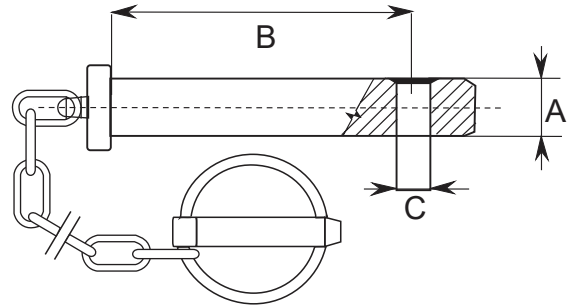


Top Link Pins (mm size)

Part No.	Cat	A mm	B mm	C mm	D mm
RS1501	1	19	76	12	22
RS1502	1	19	92	12	22
RS1503	1	19	102	12	22
RS1504	2	25	78	12	28
RS1505	2	25	110	12	28
RS1506	2	25	142	12	28
RS1507	3	32	125	12	38
RS1508	1	19	85	12	24
RS1509	2	25.4	95	12	30
RS1510	3	32	105	12	38

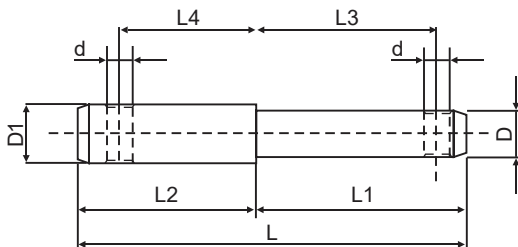
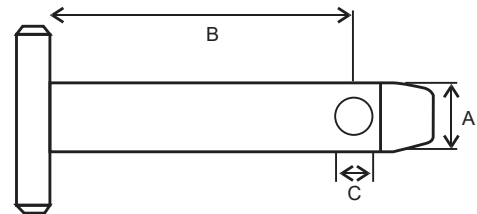
Top Link Pin With Chain & Linch Pin

Part No.	Cat	A	B	C
RS1511	1	19	100	11
RS1512	2	25	100	11



Top Link Pins (Welded)

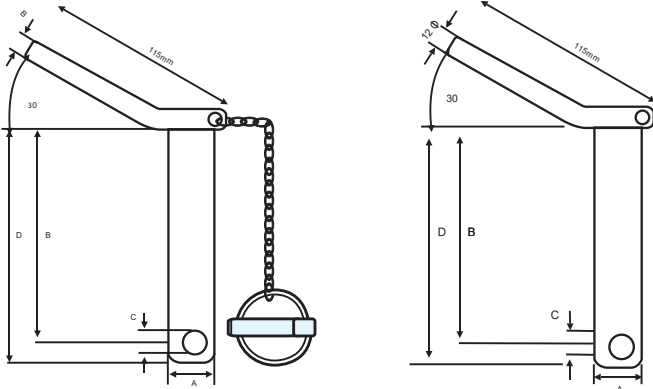
Part No.	Cat	A mm	B mm	C mm
RS1513	1	19	89	11
RS1514	1	19	116	11
RS1515	2	25	118	11



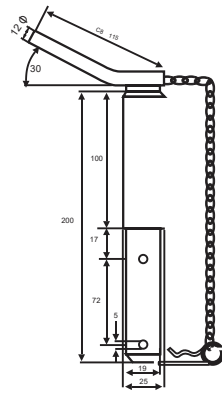
Weld on Implement Mounting Pins

Part No.	D mm	D1 mm	L mm	L1 mm	L2 mm	L3 mm	L4 mm	d mm
RS1617	22	28	190	105	85	85	62	12

Top Link Pin Welded Handle (mm size)



Part No.	With Chain	Without Chain	Cat	A	B	C	D
RS1516	RS1516a	1	19	135	12	151	
RS1517	RS1517a	1	19	175	12	191	
RS1518	RS1518a	1	22	135	12	151	
RS1519	RS1519a	1	22	175	12	191	
RS1520	RS1520a	2	25	135	12	151	
RS1521	RS1521a	2	25	175	12	191	
RS1522	RS1522a	2	28	135	12	151	
RS1523	RS1523a	2	28	175	12	191	
RS1524	RS1524a	3	32	135	12	151	
RS1525	RS1525a	3	32	175	12	191	
RS1526	RS1526a	3	37	135	12	151	
RS1527	RS1527a	3	37	175	12	191	



Universal Top Link Pins

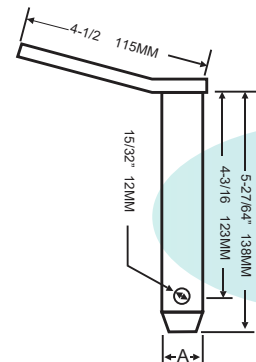
Part No.	Cat
RS1528	1 - 2
RS1529	1 - 2

Welded Handle Pins (in Inches)

Part No.	Cat	A	B	C
RS1530	TL	3/4"	4-3/16"	15/32"
RS1531	LL	7/8"	4-3/16"	15/32"
RS1532	TL	1"	4-3/16"	15/32"
RS1533	LL	1"	4-3/16"	15/32"

(TL : Top Link Pin)

(LL : Lower Link Pin)

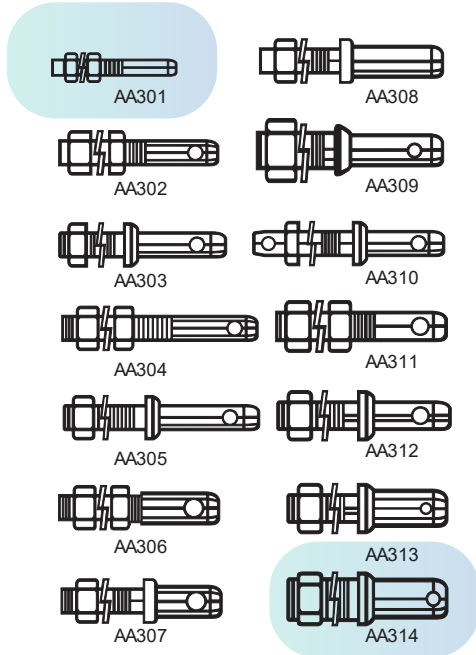


Head Less Top Link Pins



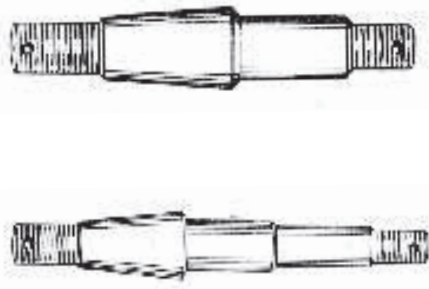
Part No.	Cat	(A) Dia mm	(B) Usable mm	(C) Hole mm
RS1535	1	19	96	12
RS1536	1	19	126	12
RS1537	1	19	163	12
RS1538	1	19	210	12
RS1539	2	25	100	12
RS1540	2	25	120	12
RS1541	2	25	166	12
RS1542	2	25	210	12
RS1543	2	25	250	12

LOWER LINK PINS



High Stress & Hot Forged Lift Arm Mounting Pins

Part No.	Cat	Type	Pin Dia	Thread Dia	Overall Length
RS301	0	Adj.	5/8"	5/8"	4"
RS302	1	Adj.	7/8"	7/8"	5-5/16"
RS303	1	Forged	7/8"	7/8"	5-1/2"
RS304	1	Adj.XL	7/8"	7/8"	6-1/4"
RS305	1	ForgedXL	7/8"	7/8"	6-1/2"
RS306	1 to 2	Adj.	1-1/8"	7/8"	5-3/16"
RS307	1 to 2	Forged	1-1/8"	7/8"	5-1/4"
RS308	1 to 2	ForgedXL	1-1/8"	7/8"	6-5/16"
RS309	2 to 1	Forged	7/8"	1-1/8"	5-3/4"
RS310	1 & 2	Forged	7/8" & 1-1/8"	1"	8"
RS311	2	Adj.	1-1/8"	1-1/8"	6-1/4"
RS312	2	Forged	1-1/8"	1-1/8"	6-1/4"
RS313	2 to 3	Forged	1-7/16"	1-1/8"	5-7/8"
RS314	3	Forged	1-7/16"	1-3/8"	5-7/8"

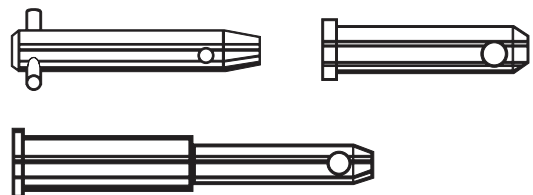


Lower Link Mounting Pins

Part No.	Type	
RS325	LH	FORD
RS326	RH	FORD

Clevis Type Lift Arm Mounting Pins

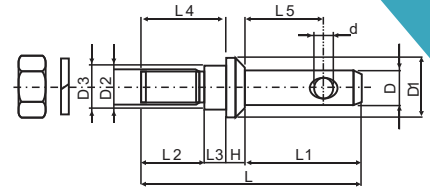
Part No.	Cat	Dia	Usable
RS350	2	1-1/8"	3-5/16"
RS351	2	1-1/8"	4-7/16"
RS352	2	1-1/8"	7-5/8"
RS353	3	1-7/16"	4-11/16"
RS354	2 & 3	1-1/8" & 1-7/16"	4 x 4-1/2"



For use with heavy duty implements with yoke type mountings.
Machined from high carbon steel. Zinc Plated

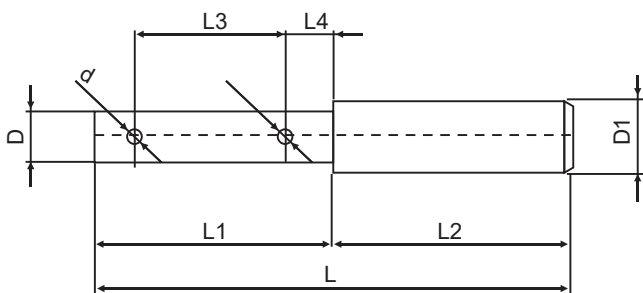
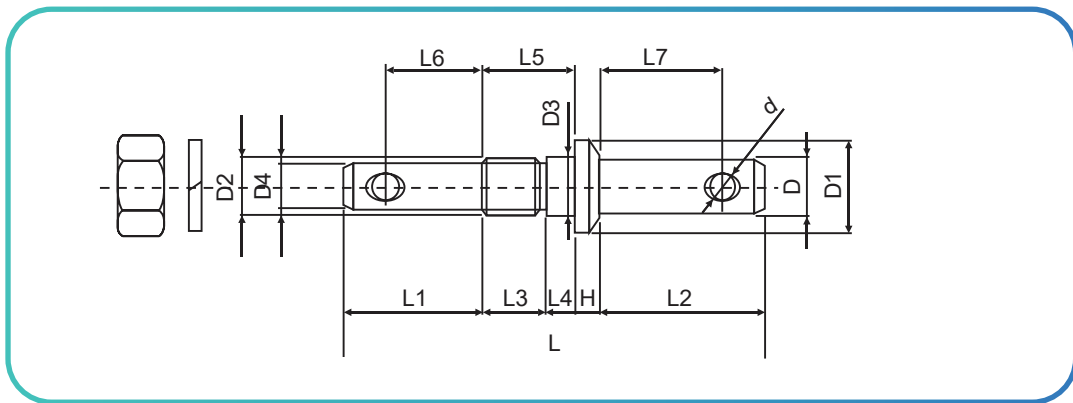
Implementation Mounting Pins - MMSize

Part No.	D mm	L mm	L1 mm	L2 mm	L3 mm	H mm	D1 mm	D2 mm	D3 mm	L4 mm	L5 mm	d mm
RS1600	22	140	74	40	14	12	38	22x1.5	28	54	50	12
RS1601	28	150	78	40	20	12	44	22X1.5	28	60	60	120
RSA1602	22	140	74	40	14	12	38	22X1.5	22	54	50	12
RS1603	22	140	74	40	14	12	38	20X1.5	20	54	50	12
RS1604	28	150	78	46	14	12	44	22X1.5	22	60	60	12



Double Implementation Mounting Pins - MM Size

Part No.	D mm	L mm	L1 mm	L2 mm	L3 mm	L4 mm	D1 mm	H mm	D2 mm	D3 mm	D4 mm	L5 mm	L6 mm	L7 mm	d mm
RS1605	28	200	68	78	28	14	44	12	27x3	28	22	42	48	58	12
RS1606	28	200	68	78	28	14	44	12	24x2	25	22	42	48	58	12



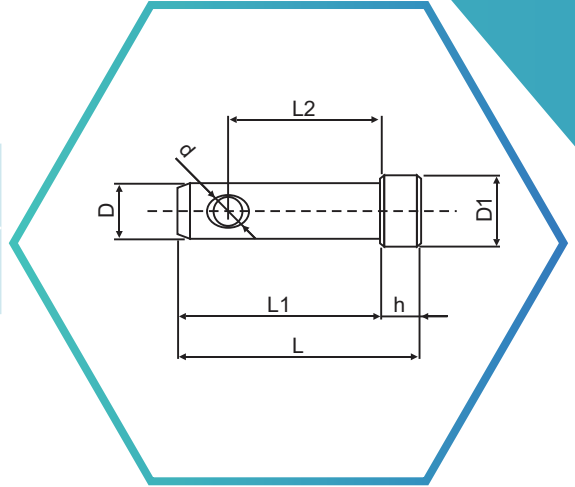
Implementation Pins

Part No.	D mm	D1 mm	L mm	L1 mm	L2 mm	L3 mm	L4 mm	d mm
RS1607	19	25	180	90	90	57	18	5
RS1608	22	28	180	90	90	57	18	5

LOWER LINK PINS

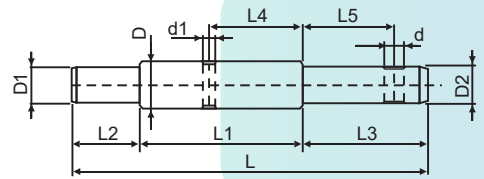
Weld On Link Pins

Part No.	D mm	D1 mm	L mm	L1 mm	L2 mm	h mm	d mm
RS1609	22	28	95	80	60	15	11.5
RS1610	28	34	95	80	60	15	11.5



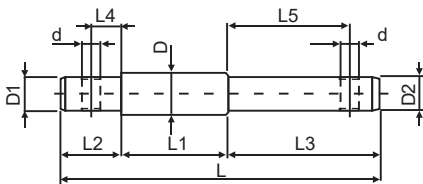
Interchangeable Implement Mounting Pins

Part No.	D mm	D1 mm	D2 mm	L mm	L1 mm	L2 mm	L3 mm	L4 mm	L5 mm	d mm	d1 mm
RS1611	28	22	22	200	115	30	55	67	40	12	6.5
RS1612	28	22	25	200	115	30	55	67	40	12	6.5



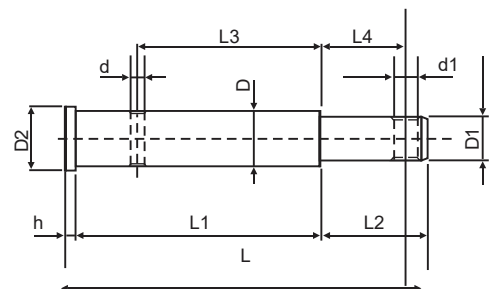
Interchangeable Implement Mounting Pins

Part No.	D mm	D1 mm	D2 mm	L mm	L1 mm	L2 mm	L3 mm	L4 mm	L5 mm	d mm
RS1613	28	22	22	210	70	40	100	20	80	12
RS1614	25	19	19	210	70	40	100	20	80	12



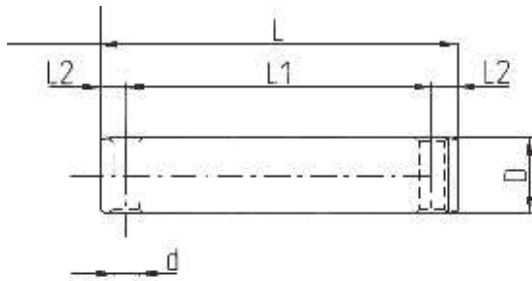
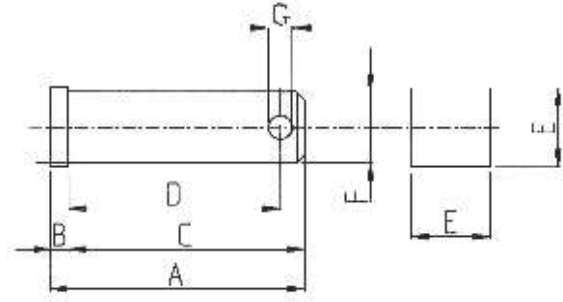
Implement Mounting Pin For Fiat Tractors

Part No.	D mm	D1 mm	D2 mm	L mm	L1 mm	L2 mm	L3 mm	L4 mm	h mm	d mm	d1 mm
RS1615	28	22	32	182.5	122	56.5	93.5	38.5	4	6.5	12
RS1616	28	22	32	172.5	112	56.5	83.5	38.5	4	6.5	12



Square Head Pins For Fiat Tractors

Part No.	A mm	B mm	C mm	D mm	E mm	F mm	G mm
RS1620	52	5	47	41	20	18	6
RS1621	65	5	60	54	20	18	6
RS1622	65	5	60	52	30	26	6
RS1623	75	5	70	60	30	26	6
RS1624	100	5	95	86	30	26	6

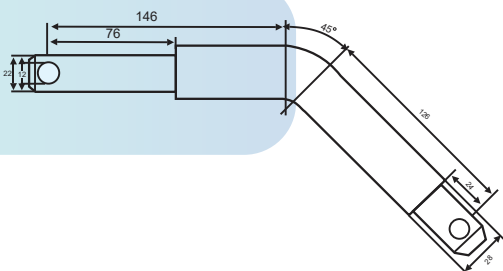
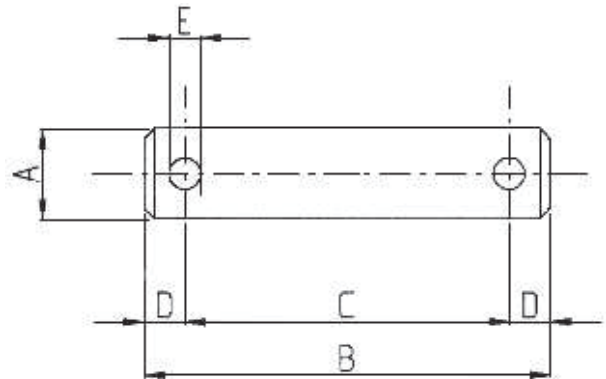


Linkage Pins

Part No.	D mm	L mm	L1 mm	L2 mm	d mm
RS1625	18	64	52	6	6
RS1626	18	74	62	6	6
RS1627	18	84	72	6	6
RS1628	18	94	82	6	6

Pins For Jokes

Part No.	A mm	B mm	C mm	D mm	E mm
RS1629	20	71	58	6	6
RS1630	20	81	68	6	6
RS1631	22	64	52	6	6
RS1632	24	90	77	6	6
RS1633	24	104	91	6	6
RS1634	26	66	57	6	6
RS1635	28	104	91	6	6



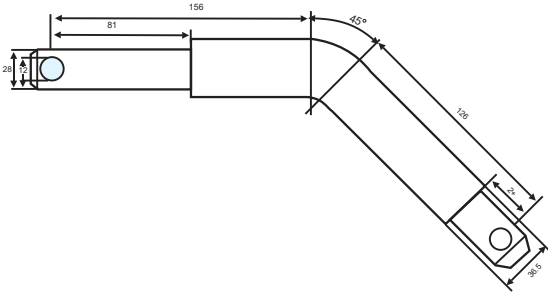
Lower Link Pins

Part No. RS1635

LOWER LINK PINS

Lower Link Pins

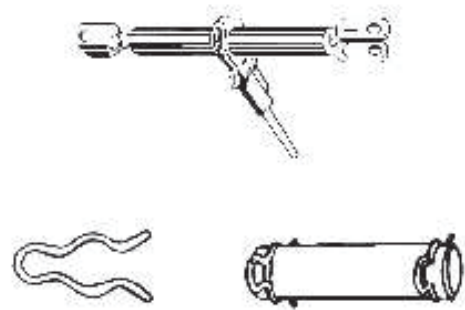
Part No. RS1636



Ratchet Jacks & Pins

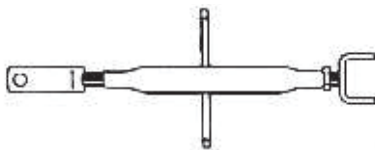
Part No.	Description	Thread Dia	Clevis Pin Dia	Adjustment
RS425	Jack	1-1/4"	1"	20"-28"
Part No.	Description	Pin Dia	Usable	Overall
RS426	Pin Kit	1"	2-3/4"	3-1/2"
RS427	Clip	1/8"	-	2-1/2"

RATCHET JACK



Replaces most standard hydraulic cylinder. Safety design prevents ends from being accidentally threaded out of body. Comes with clevis pins, clips and handle. Powder coated finish.

LEVELLING ASSEMBLY



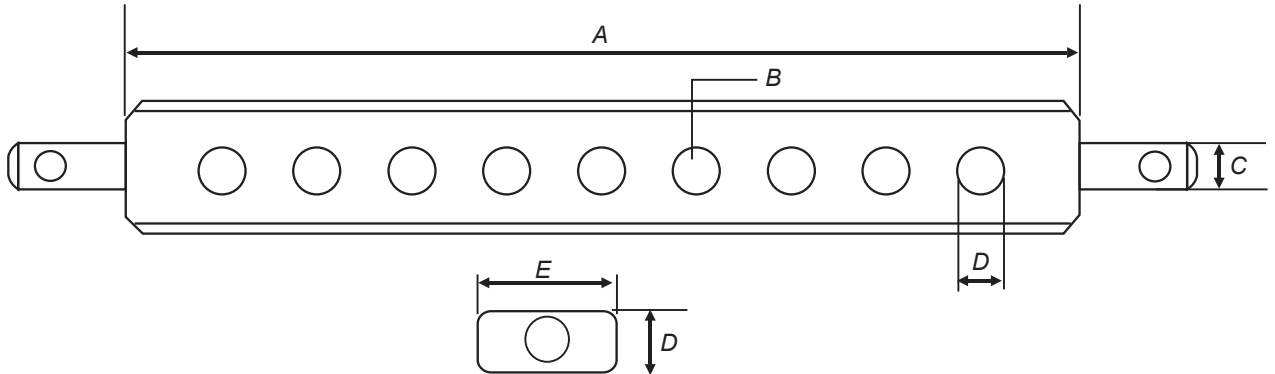
Part No.	Thread Dia	Overall Length	Replaces
RS430	7/8"	19-1/4"	FORDNCA577A

LIFT ARM



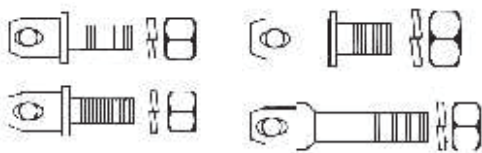
Part No.	Ph Holes	Length Holes Centre	Fits
RS435	7/8"	32"	Ferguson All MF 35, 50, Ford 2N, 8N, 9N, NAA John Deere 1010

DRAW BARS



Part No.	Cat	No. of Holes	A Inch/mm	B Inch/mm	C Inch/mm	D Inch/mm	E Inch/mm	Colour
RS400	0	7	20"	5/8"	5/8"	5/8"	2"	Red
RS401	0	7	20"	3/4"	7/8"	1"	2-1/2"	Black
RS402	1	11	26"	3/4"	7/8"	1"	2-1/2"	Red
RS403	2	11	26"	3/4"	1-1/8"	1-1/4"	3"	Blue
RS404	2	13	32"	3/4"	1-1/8"	1-1/4"	3"	Green
RS405	2	7	32"	1-1/8"	1-1/8"	1-1/4"	3"	Red
RS406	3	5	38"	1-1/4"	1-7/16"	1-3/4"	3-1/2"	Black
RS407	1	11	26	25/32	7/8"	1-3/16"	2-1/2"	Red
RSA408	2	11	26	25/32	1-1/8"	1-3/16"	2-1/2"	Red
RS1705	1	9	657	20	22	30	60	Red
RS1706	2	9	661	20	28.5	30	60	Red
RS1707	2	7	842	25	28.5	30	60	Red
RS1708	2	7	842	28	28.5	30	60	Red
RS1709	2	9	862	33	28.5	30	80	Red
RS1710	3	11	965	33	36	45	90	Red
RSA1711	2	9	820	33	28.5	30	80	Red
RS1712	1	7	680	22	22	25	63	Red
RS1713	2	7	780	28	28	33	75	Red

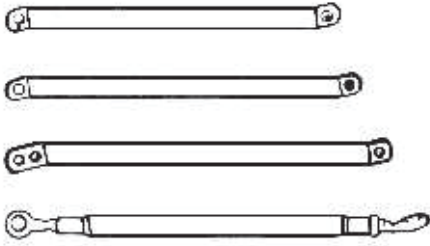
STABILIZER ASSEMBLIES



Stabilizer Pins

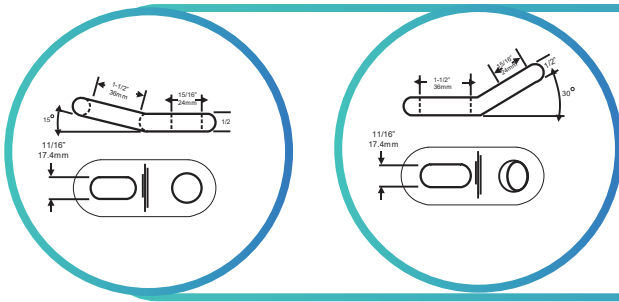
Part No.	Pin Dia	Thread Dia	Overall	Reference
RS450	7/8"	5/8"	2-5/8"	Ford 230044, MF 181777 MI
RS451	7/8"	5/8"	2-7/8"	Same & Longer Usable
RS452	7/8"	5/8"	3-1/8"	Ford 141185, MF 668154 MI

STABILIZER ASSEMBLIES



Stabilizer Arms & Kits

Part No.	Cat	Size	Pin Holes	Centre Distance
RS475	1	3/8"x1-3/4"	7/8"	31-9/16"
RS476	1	3/8"x1-3/4"	7/8"	33-1/8"
RS477	1	3/8"x1-3/4"	7/8"	31-1/8" & 34-3/4"
RS478	1	7/8" Thread	7/8"	27-1/2" - 35"

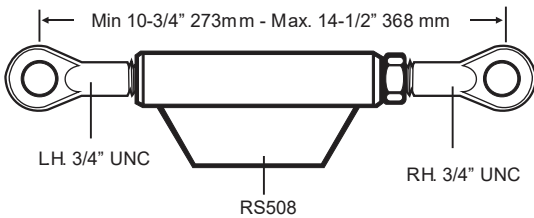
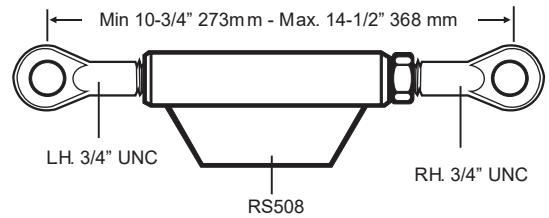


Link Plates

Part No.	RS500
Part No.	RS501
Part No.	RS502

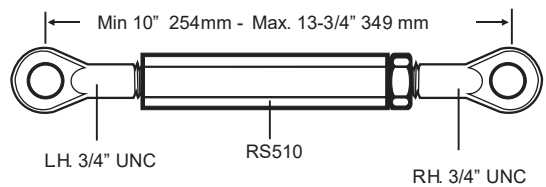
TURN BUCKLE ASSEMBLY

Part No.	RS505
----------	-------



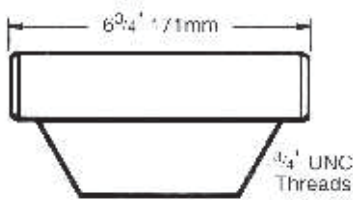
TURN BUCKLE ASSEMBLY

Part No.	RS506
----------	-------



TURN BUCKLE ASSEMBLY

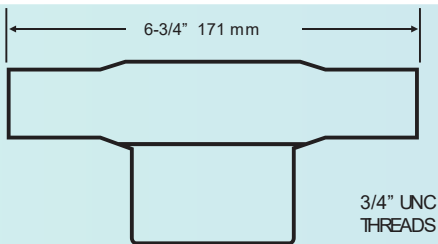
Part No.	RS507
----------	-------



Turn Buckle

Part No.
RS508

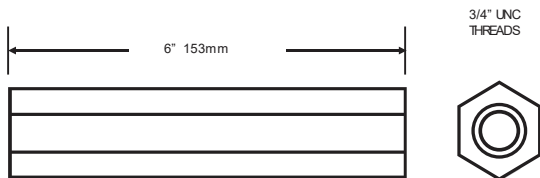
Finish : Bright Zinc Plated
and Gold Passivated



Turn Buckle

Part No.
RS509

Finish : Bright Zinc Plated
and Gold Passivated



Turn Buckle

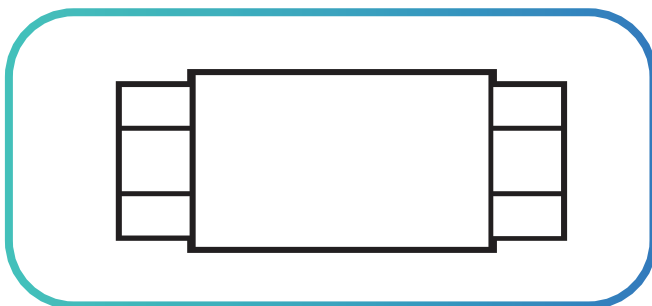
Part No.
RS510

Finish : Bright Zinc Plated
and Gold Passivated

Ford Turn Buckle

Part No.
RS1801

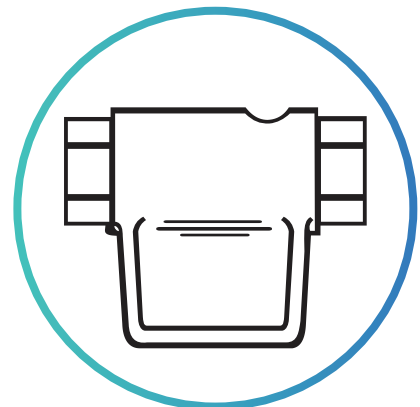
For assemblies 1832 & 1833



Ford Turn Buckle

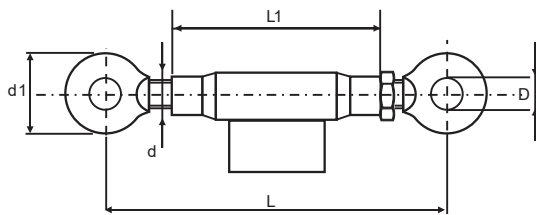
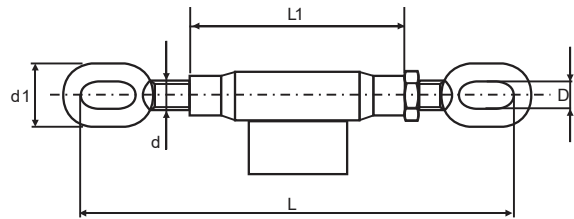
Part No.
RS1802

For assemblies 1830 & 1831



Adjusters for Stabilizers - MM Size (Turn Buckle)

Part No.	L mm	L1 mm	d mm	d1 mm	D mm
RS1850	245	120	14x2	32	12
RS1851	245	120	16x2	35	14
RS1852	250	135	18x2.5	38	14
RS1853	275	130	20x2.5	38	14
RS1854	280	150	22x2.5	38	14

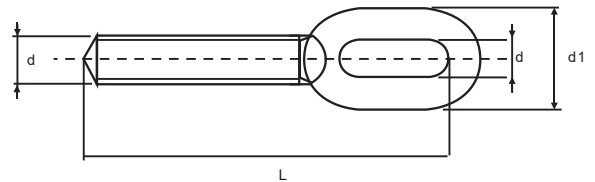


Adjusters for Stabilizers - MM Size (Turn Buckle)

Part No.	L mm	L1 mm	d mm	d1 mm	D mm
RS1855	210	120	16x2	46	18
RS1856	230	130	20x2.5	46	18
RS1857	250	150	22x2.5	50	20

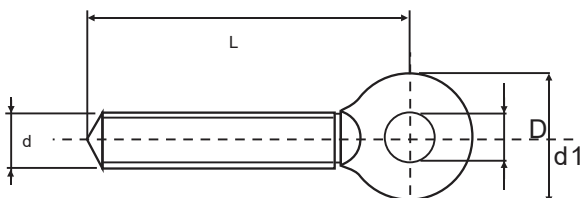
Round And Eyelet Head Shaped For Huffs

Part No.	Type	L mm	d mm	d1 mm	D mm
RS1860	RH	121	14X2	32	12
RS1861	LH		16X2	35	14
RS1862	RH	136	18X2.5	38	14
RS1863	LH		20X2.5	38	14
RS1864	RH	139	22X2.5	38	14
RS1865	LH		22X2.5	38	14
RS1866	RH	139	22X2.5	38	14
RS1867	LH		22X2.5	38	14
RS1868	RH	139	22X2.5	38	14
RS1869	LH		22X2.5	38	14



Round And Eyelet Head Shaped For Huffs

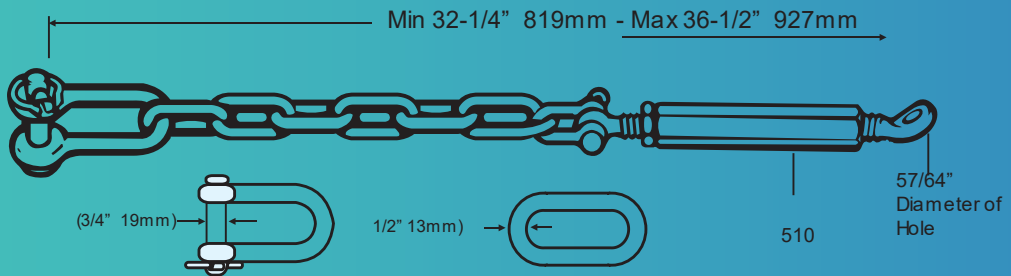
Part No.	Type	L mm	d mm	d1 mm	D mm
RS1870	RH	97	16X2	46	18
RS1871	LH		16X2	46	18
RS1872	RH	115	20X2.5	46	18
RS1873	LH		20X2.5	46	18
RS1874	RH	115	22X2.5	50	20
RS1875	LH		22X2.5	50	20



STABILIZER ASSEMBLIES

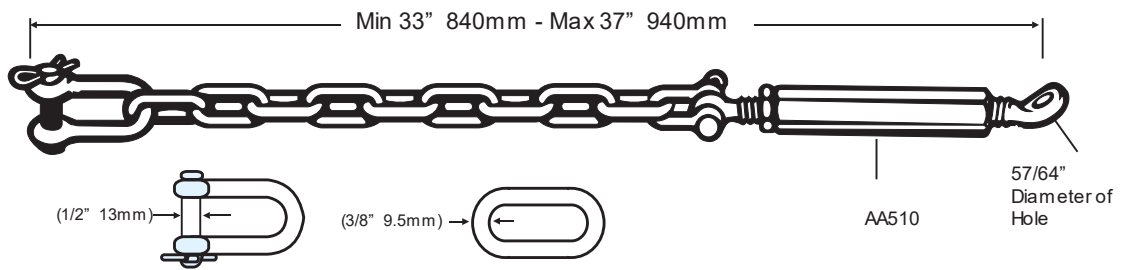
Check Chain Stabilizer

Part No. RS511



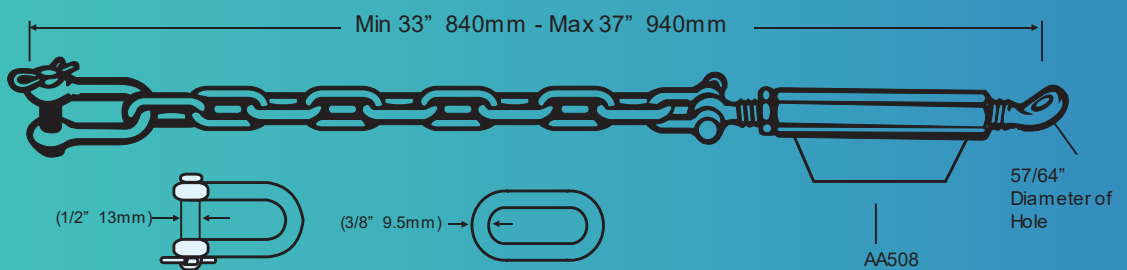
Check Chain Stabilizer

Part No. RS1805



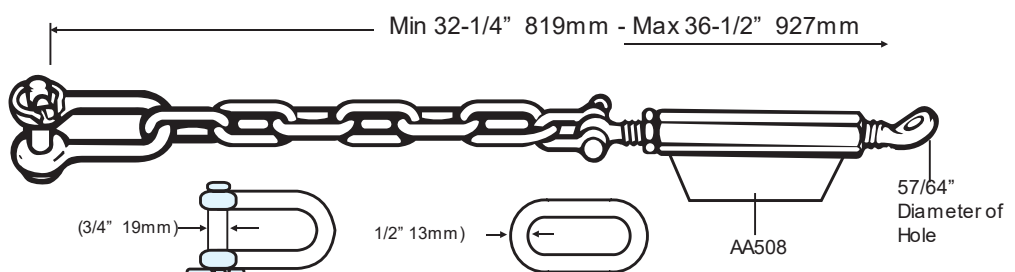
Check Chain Stabilizer

Part No. RS1806



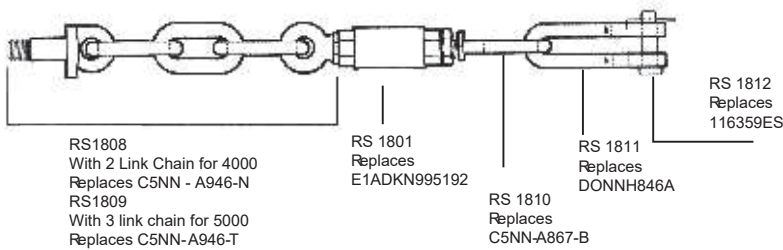
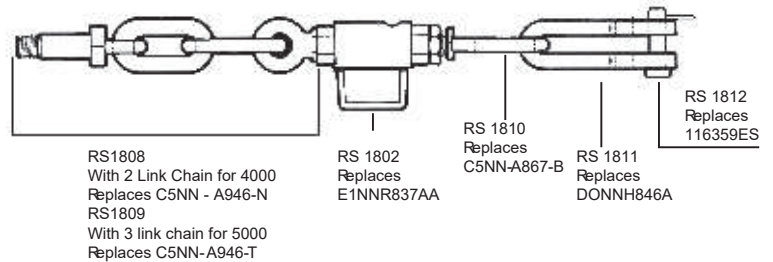
Check Chain Stabilizer

Part No. RS1807



Check Chain Stabilizer Assemblies For Ford

Part No.
 RS1830 for Ford 4000
 RS1831 for Ford 5000

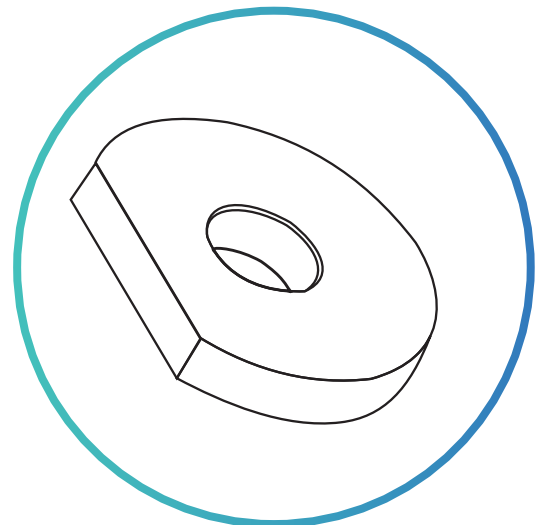


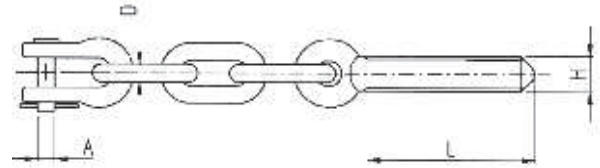
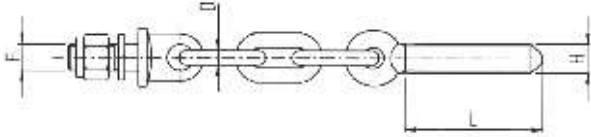
Part No.
 RS1832 for Ford 4000
 Replaces
 CFPN - D936
 RS1833 for Ford 5000
 Replaces
 CFPN - D936

Stabilizer 'D' Washer

Part No.

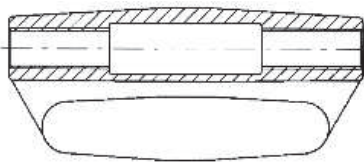
RS1813 for use on all
 above Ford
 Stabilizer.





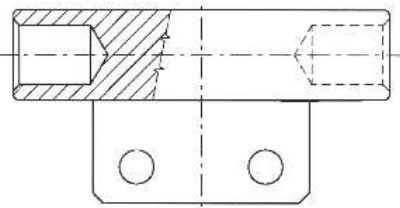
Check Chains for Lift

Part No.	No. of Links	D mm	A mm	H	L mm	F	Fits
RS1900	3	12	-	M16X2LH	75	M18X1.5	AA1928
RS1901	3	12	12	M16X2RH	75	-	AA1928
RS1902	2	12	-	M16X2LH	95	M22X1.5	AA1936
RS1903	1	12	14-14	M16X2RH	95	-	AA1936
RS1904	1	12	-	M16x2LH	75	M22x1.5	AA1935
RS1905	1	12	14-14	M16x2RH	75	-	AA1935
RS1906	1	14	-	M16x2LH	75	M22x1.5	AA1934
RS1907	1	14	14-14	M16x2RH	75	-	AA1934
RS1908	2	12	-	M16x2LH	75	M18x1.5	AA1927
RS1909	2	12	12	M16x2RH	75	-	AA1927
RS1910	4	12	-	M16x2LH	75	M18x1.5	AA1929
RS1911	4	12	12	M16x2RH	75	-	AA1929



Cast Iron Tube For Chains

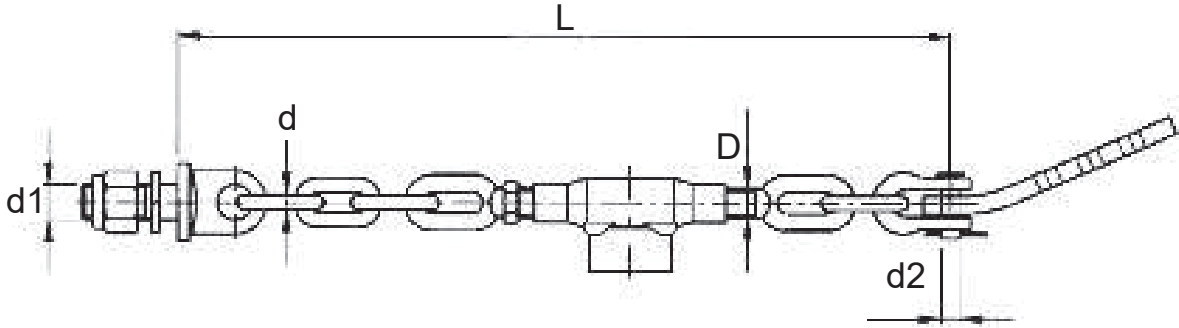
Part No. RS1915



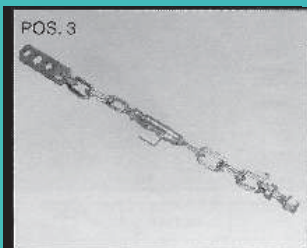
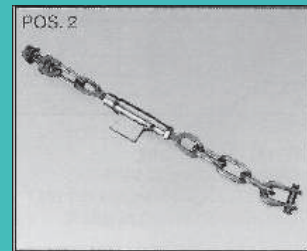
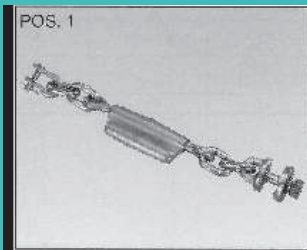
Connect Support For Fiat C455 - C605

Part No. RS1916

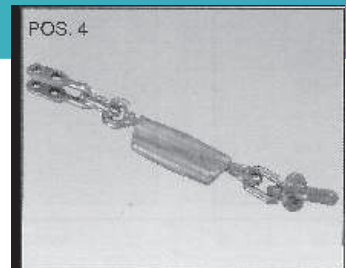
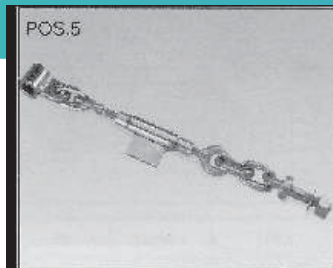
STABILIZER ASSEMBLIES



Check Chain Assemblies for Lift

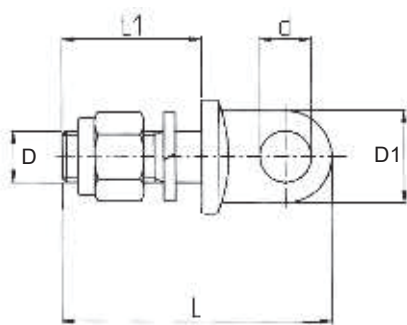
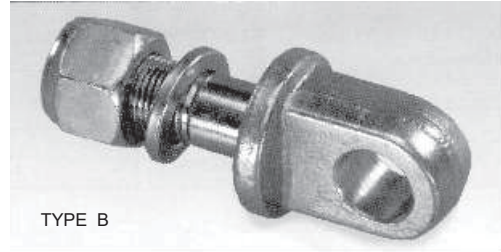
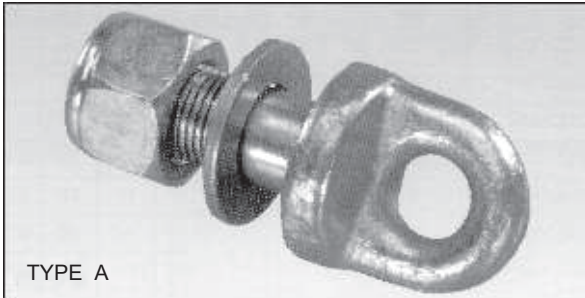


Part No.	Pos.	L Min mm	d1 mm	d2 mm	D	d mm	No. of Links
RS1920	2	440	20	14	20X2.5	12	1+1
RS1921	2	570	20	14	20X2.5	12	2+2
RS1922	2	690	20	14	20X2.5	12	3+3
RS1923	2	620	20	14	20X2.5	12	3+2
RS1924	2	460	18	14	16X2	10	3+1
RS1925	3	620	20	14	20X2.5	12	3+2
RS1926	3	570	20	14	20X2.5	12	2+2
RS1927	1	420	18	12	16X2	12	2+2
RS1928	1	490	18	12	16X2	12	3+3
RS1929	1	550	18	12	16X2	12	4+4
RS1930	2	670	20	16	22X2.5	18	4+3
RS1931	4	410	22	14-14	16X2	13	1+1
RS1932	4	520	22	14-14	16X2	13	2+1(2+2)
RS1933	5	400	20	-	16X2	12	1+1
RS1934	2	430	22	14-14	16X2	14	1+1
RS1935	2	370	22	14-14	16X2	12	1+1
RS1936	2	450	22	14-14	16X2	12	2+1



STABILIZER ASSEMBLIES

Eye Bolt For Stabilizers



Part No.	D	L	d	D1	L1	Type
RS1940	16X1.5	80	15	36	43	A
RS1941	18X1.5	80	15	36	43	A
RS1942	20X2.5	100	18	45	56	B
RS1943	24X2	125	24	53	65	B
RS1944	20X2.5	125	20	53	65	B

TIRE CHAIN HARDWARE

Boomer

Part No. RS30010 Overall Length 7", Zinc Plated Steel



Clevis

Part No. RS30011 Overall Length 2", c/w Thumb Screw, Zinc Plated Steel.



C-Hook

Part No. RS30012 Overall Length 4", Zinc Plated Steel



Drill Drag Chain

Fits most standard drills

Part No.	RingDia	Thickness
5000	3-1/2"	1/2"

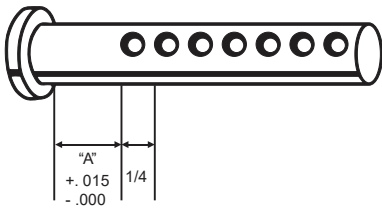


CLEVIS PINS

Part No.	Size	Hole Size	A	No. of Holes
RS2017	5/16"X3"	1/8"	1-5/16"	7
RS2018	5/16"X3-1/2"	1/8"	1-13/16"	7
RS2019	5/16"X4"	1/8"	2-5/16"	7
RS2020	3/8"X1"	5/32"	1/2"	2
RS2021	3/8"X1-1/2"	5/32"	3/4"	3
RS2022	3/8"X2"	5/32"	3/4"	5
RS2023	3/8"X2-1/2"	5/32"	1-1/4"	5
RS2024	3/8"X3"	5/32"	1-1/4"	7
RS2025	3/8"X3-1/2"	5/32"	1-3/4"	7
RS2026	3/8"X4"	5/32"	2-1/4"	7
RS2027	7/16"X2"	5/32"	3/4"	5
RS2028	7/16"X2-1/2"	5/32"	1-1/4"	5
RS2029	7/16"X3"	5/32"	1-1/4"	7
RS2030	7/16"X3-1/2"	5/32"	1-3/4"	7
RS2031	7/16"X4"	5/32"	2-1/4"	7
RS2032	1/2"X2"	5/32"	3/4"	5
RS2033	1/2"X2-1/2"	5/32"	3/4"	7
RS2034	1/2"X3"	5/32"	1-1/4"	7
RS2035	1/2"X3-1/2"	5/32"	1-3/4"	7
RS2036	1/2"X4"	5/32"	2-1/4"	7
RS2037	9/16"X2"	5/32"	3/4"	5
RS2038	9/16"X3"	5/32"	1-1/4"	7
RS2039	9/16"X4"	5/32"	2-1/4"	7
RS2040	5/8"X2"	5/32"	3/4"	5
RS2041	5/8"X3"	5/32"	1-1/4"	7
RS2042	5/8"X4"	5/32"	2-1/4"	7

Part No.	Size	Hole Size	A	No. of Holes
RS2001	3/16"X1"	3/32"	5/8"	2
RS2002	3/16"X1-1/2"	3/32"	3/8"	5
RS2003	3/16"X2"	3/32"	7/8"	5
RS2004	3/16"X2-1/2"	3/32"	1-3/8"	5
RS2005	3/16"X3"	3/32"	1-7/8"	5
RS2006	1/4"X1"	3/32"	5/8"	2
RS2007	1/4"X1-1/2"	3/32"	3/8"	5
RS2008	1/4"X2"	3/32"	7/8"	5
RS2009	1/4"X2-1/2"	3/32"	1-3/8"	5
RS2010	1/4"X3"	3/32"	1-3/8"	7
RS2011	1/4"X3-1/2"	3/32"	1-7/8"	7
RS2012	1/4"X4"	3/32"	2-3/8"	7
RS2013	5/16"X1"	1/8"	9/16"	2
RS2014	5/16"X1-1/2"	1/8"	13/16"	3
RS2015	5/16"X2"	1/8"	13/16"	5
RS2016	5/16"X2-1/2"	1/8"	1-5/16"	5

Adjustable Clevis Pins



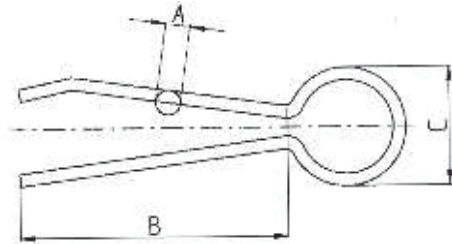
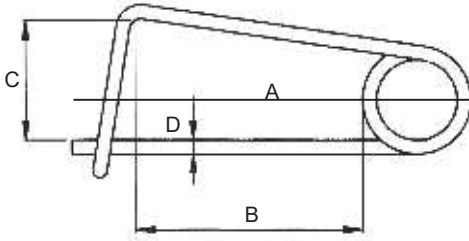
CLIPS

Hair Clip Cotter

(Made of Spring Steel)



Part No.	A		Pin Size		B	
	inch	mm	inch	mm	inch	mm
RS2101	5/64"	2	1/4"-7/16"	6-11	1-5/8	42
RS2102	3/32"	2.5	5/16"-1/2"	8-12	1-11/16"	43
RS2103	1/8"	3	3/8"-11/16"	10-18	2-1/2"	64
RS2104	5/32"	4	1/2"-7/8"	12-22	3"	76
RS2105	11/64"	4.5	3/8"-11/16"	10-18	4-1/8"	105
RS2106	13/64"	5	5/8"-1-1/16"	16-27	4"	100
RS2107	1/4"	6	3/4"-1-1/4"	19-32	4-1/2"	113
RS2108	9/32"	7	1"-1-1/2"	25-28	6"	152

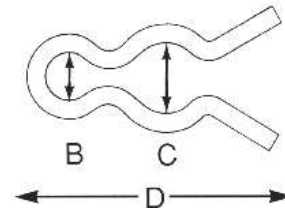
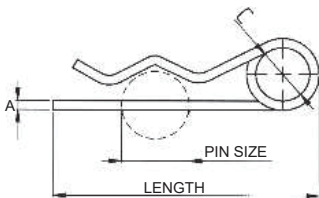


Safety Pins

Part No.	Length A	B	C	Wire Dia D
RS2401	1-9/16"	15/16"	3/8"	.047
RS2402	1-3/4"	1-1/16"	3/8"	.058
RS2403	2-3/4"	1-11/16"	5/8"	.091
RS2404	4-3/8"	2-13/16"	13/16"	.120
RS2405	5-3/4"	3-3/4"	1-1/8"	.148

Clips

Part No.	A (mm)	B(mm)	C(mm)
RS2501	3X1.5	38	17
RS2502	5X2.5	56	27



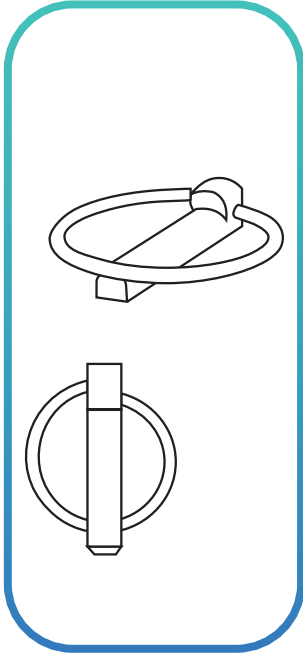
Hair Clip Cotter Double Round (Made of Spring Steel)

Part No.	A		Pin Size		Length	
	inch	mm	inch	mm	inch	mm
RS2201	1/3"	3	3/8"-3/4"	10-19	3"	75
RS2202	5/32"	4	1/2"-7/8"	12-22	3-1/2"	90
RS2203	3/16"	5	5/8"-1-1/16"	16-27	4-1/4"	110
RS2204	1/4"	6	3/4"-1-1/4"	19-32	4-3/4"	120
RS2205	9/32"	7	1"-1-1/2"	25-38	6-11/16"	170

Hair Pin Clips (Made of Spring Steel)

Part No.	Wire Dia	A Shaft Size	B	C	D
RS2301	.029	1/8"	1/16"	5/64"	5/16"
RS2302	.031	3/16"	7/64"	9/64"	1/2"
RS2303	.033	1/4"	1/8"	7/32"	5/8"
RS2304	.048	5/16"	1/8"	1/4"	3/4"
RS2305	.052	3/8"	3/16"	5/16"	31/32"
RS2306	.055	7/16"	7/32"	3/8"	1-1/8"
RS2307	.064	1/2"	1/4"	7/16"	1-1/8"
RS2308	.087	5/8"	5/16"	17/32"	1-1/2"
RS2309	.093	3/4"	3/8"	21/32"	1-13/16"
RS2310	.105	7/8"	7/16"	25/32"	2-5/64"
RS2311	.125	1"	1/2"	7/8"	2-9/32"
RS2312	.186	1"	5/64"	51/64"	3"

LINCH PINS

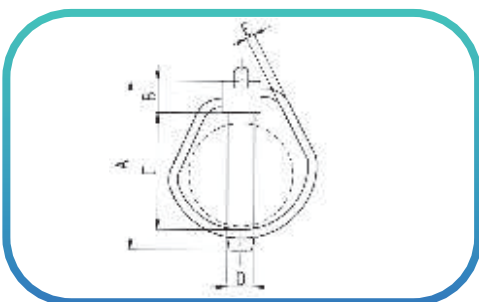
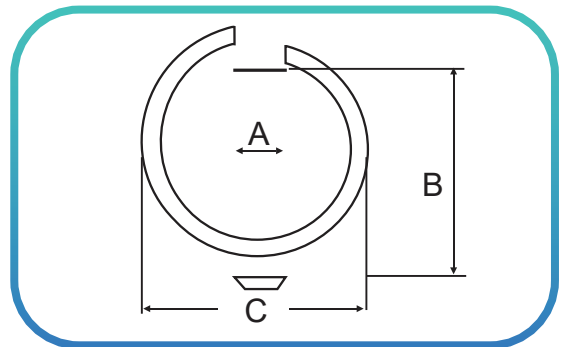


Linch Pins

Part No.	Pin Dia	Type	Cat
RS0560	0	3/16"	Std
RS0561	0	3/16"	W/Chain
RS0562	1&2	1/4"	Std
RS0563	1&2	1/4"	W/Chain
RS0564	1&2	5/16"	Std
RS0565	1&2	5/16"	W/Chain
RS0566	1&2	3/8"	Std
RS0567	1&2	3/8"	W/Chain
RS0568	1&2	7/16"	Std
RS0569	1&2	7/16"	W/Chain
RS0570	1,2&3	7/16"	Long
RS0571	1,2&3	7/16"	Black Ring HD

Linch Pins - MM Size

Part No.	A mm	B mm	C mm
RS574	4.5	32	34
RS575	4.5	41	47
RS576	6.0	41	47
RS577	7.0	41	47
RS578	8.0	41	47
RS579	9.0	41	47
RS580	8.5	41	47
RS581	10.0	41	47
RS582	10.5	41	47
RS583	11.0	41	47
RS584	12.0	45	51



Linch Pins

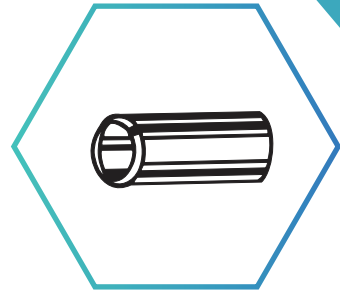
Part No.	A mm	B mm	C mm	D mm	E mm
572	70	17	48	11	4
573	75	17	52	16	4

BUSHES

Top Link Bushings

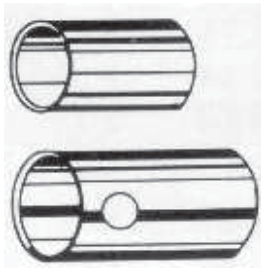
Zinc Plated

Part No.	Cat	ID	O.D	Overall
RS0600	1 to 2	3/4"	1"	2"
RS0601	1 to 2	3/4"	1"	1-5/8"
RS0602	2 to 3	1"	1-1/4"	2"



Lift Arm Bushings

Zinc Plated

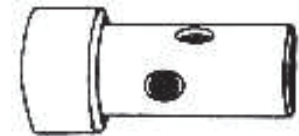


Part No.	Cat	ID Inch/mm	O.D Inch/mm	Overall Inch/mm
RS0610	1 to 2	7/8"	1-1/8"	1-3/4"
RS0611	1 to 2	7/8"	1-1/8"	1-3/8"
RS0612	2 to 3	1-1/8"	1-7/16"	1-3/4"
RS0613	2 to 3	1-1/8"	1-7/16"	2-3/4"
RS0614	2 to 3	1-1/8"	1-7/16"	3-1/4"
RS0615	2 to 3	1-1/8"	1-7/16"	2-1/2" with hole
RS0616	1 to 2	22	28	63 with hole

Fits most category
3 Quick Hitches.
Converts category 2
Implement pins to
category 3.
Precision machined
and zinc plated .

Quick Hitch Adaptor Bushings

Part No.	Cat	ID	O.D
RS0620	2 to 3	1-1/8"	1-7/16"

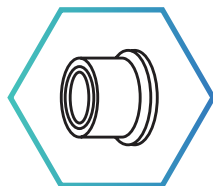


Top Link Bushings

Part No.	Cat
RS0617	1 & 2

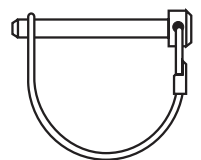
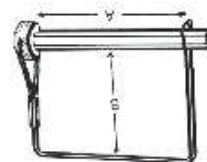
Single Wire Style

Part No.	Shaft Dia	Usable	Shape
RS0621	5/16"	3-1/2"	Square
RS0622	3/8"	3"	Square



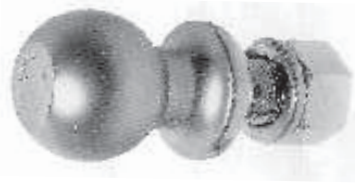
P.T.O. Accessories

Part No.	Shaft Dia	Usable	Shape
RS0623	1/4"	1-3/4"	Round
RS0624	1/4"	2-1/2"	Square
RS0625	5/16"	2-1/4"	Round
RS0626	5/16"	2-1/4"	Square
RS0627	3/8"	2-1/4"	Round
RS0628	3/8"	2-1/4"	Square
RS0629	5/16"	1-3/4"	Round
RS0629a	3/8"	1-1/2"	Round



HITCHES

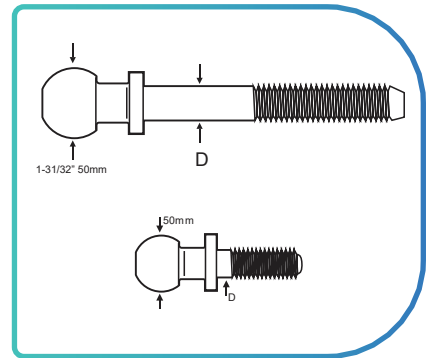
Hot Forged Hitch Balls



Part No.	Rating	Class	Max Length	Ball Size	Thread Size	Stud Lgt.
RS0650	1	2000	1-7/8"	3/4"	3/4"	1-3/4"
RS0651	2	3500	2"	3/4"	3/4"	1-3/4"
RS0652	3	5000	2"	1"	1"	2-1/8"
RS0653	4	7500	5-5/16"	1-1/4"	1-1/4"	2-1/8"

Ball Hitch Pins

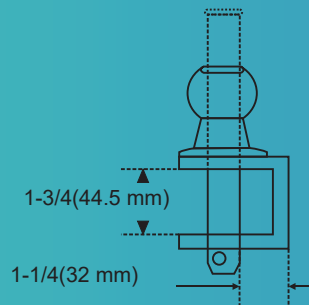
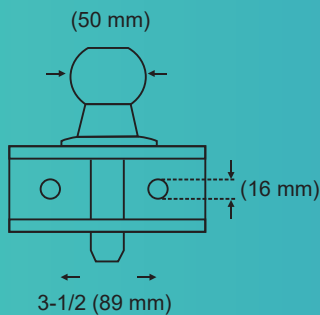
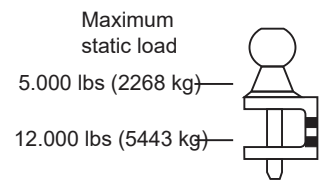
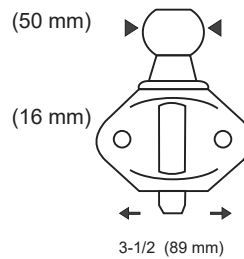
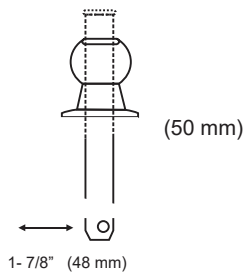
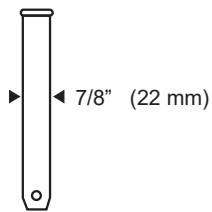
Part No.	Inch	D	MM	Fig.
RS0660	7/8"	22	22	1
RS0661	1"	25	25	1
RS0662	3/4"	19	19	2
RS0663	7/8"	22	22	2
RS0664	1"	25	25	2



DOUBLE DUTY HITCHES

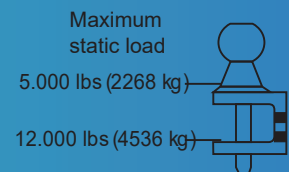
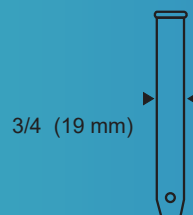
Heavy Duty Hitches

Part No. RS895



Standard Duty Hitches

Part No. RS896



HITCHES



One-piece forged body is permanently welded to extra large handle that is dipped in red P.V.C. plastic for secure grip

Heat treated steel body has black powder coated finish . Comes with clip

HEAT TREATED

Red Head Forged Hitch Pins

Part No.	Dia	Usable
RS700	1/2"	3-5/8"
RS701	5/8"	4"
RS702	5/8"	5-1/2"
RS703	3/4"	4"
RS704	3/4"	6-1/2"
RS705	7/8"	6-1/2"
RS706	1"	7-1/2"
RS707	1-1/8"	8-1/2"
RS708	1-1/4"	8-1/2"
RS709	1-1/2"	8-1/2"



HEAT TREATED

A Premium Hitch Pin Drop Forged Heat Treated . Our drop forged hitch pins are similar to the "orange pin . They are just as strong but cost less Made from on-piece , drop forged steel and heat treated quenched and tempered to 30-35 Rockwell 'C' specifications. Pins are painted bright red with zinc plated handles and clips .

Drop Forged Hitch Pins

Part No.	Dia	Usable
RS715	7/16"	3-1/2"
RS716	1/2"	3-1/2"
RS717	5/8"	3-3/4"
RS718	3/4"	4"
RS719	7/8"	4-1/4"
RS720	1"	4-3/4"
RS721	5/8"	6"
RS722	3/4"	6-1/4"
RS723	7/8"	6-1/2"
RS724	1"	6-3/4"
RS725	1-1/8"	7"
RS726	1-1/4"	7"

Note : Clip and chain can be fitted as per your requirements .

Cold Forged Hitch Pins

Part No.	Dia	Usable
RS750	1/2"	4-1/4"
RS751	5/8"	4-1/4"
RS752	5/8"	6-1/4"
RS753	3/4"	4-1/4"
RS754	3/4"	6-1/4"
RS55	7/8"	6-1/4"
RS756	1"	6-1/4"
RS757	1-1/8"	6-1/4"
RS758	1-1/4"	6-1/4"



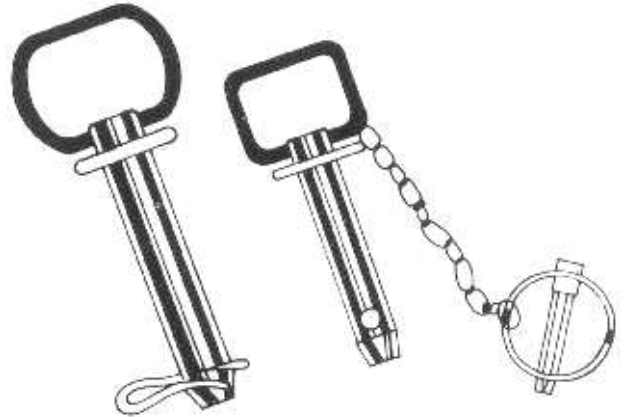
One piece forged pin , high carbon steel spring wire handle includes clip or linch pin & chain ,zinc Plated

HITCH PINS

High Stress Hitch Pins

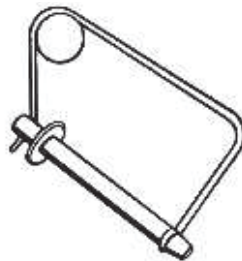
Part No.	Dia	Usable Length
RS770	1/2"	4-1/4"
RS771	5/8"	4-1/4"
RS772	5/8"	6-1/4"
RS773	3/4"	4-1/4"
RS774	3/4"	6-1/4"
RS775	7/8"	4-1/4"
RS776	7/8"	6-1/4"
RS777	1"	4-1/4"
RS778	1"	6-1/4"
RS779	1-1/8"	6-1/4"
RS780	1-1/4"	7-1/2"
RS781	1-3/8"	7-1/2"
RS782	1-1/2"	7-1/2"

Machined "Highstress" Hitch Pins Precision Machined, High Carbon Steel Bodies - Zinc Plated.



Handle-Lock Hitch Pins

Tempered spring steel wire handle snaps over pin to hold it securely in place. High carbon steel body zinc plated.



Part No.	Dia Length	Usable Length
RS790	1/2"	4-1/4"
RS791	5/8"	4-1/4"
RS792	3/4"	4-1/4"
RS793	3/4"	6-1/4"
RS794	7/8"	6-1/4"
RS795	1"	6-1/4"

Bent Hitch Pins

Part No.	Dia Length	Usable Length
RS796	1/2"	3"
RS797	5/8"	3"
RS798	3/4"	3-1/2"
RS799	7/8"	3-1/2"

One Piece, High carbon steel. Comes with clip. Zinc Plated, Auto Black



Threaded Bars

Available in Diameter from 1/4" to 1-3/4" L length Size up to 8 feet.

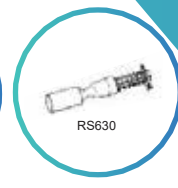
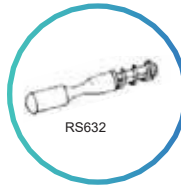


Cultivator Points

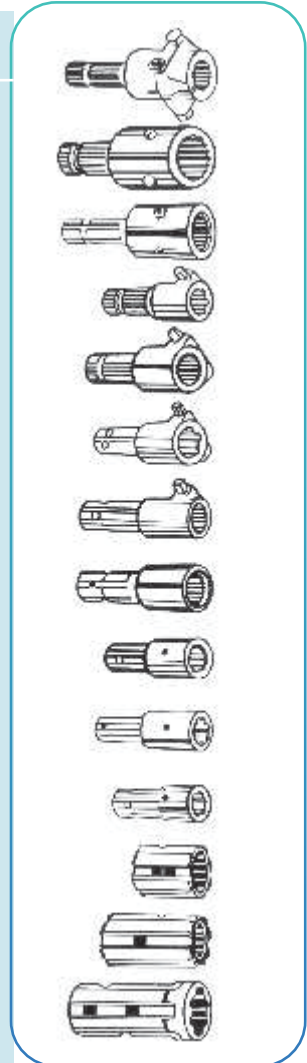
Superfine quality cultivator points made from high Grade spring steel, Hardened & Tempered.

PTO. ADAPTORS

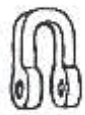
Part No. **PTO. Quick Release Repair Kit (Zinc Plated)**
 RS630 Fits most PTO. Drive Yorks Clip Includes Pins, Spring
 RS631 and 2 Clips Hot Forged Hitch balls
 RS632



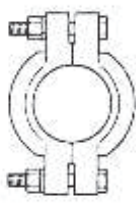
Part No.	Description	Female	Male	Extends PTO	Overall	Similar to Hub Cty No.
RS900	Forged Increaser	1-1/8"X6"	1-3/8"X6"	1-1/8"	3"	03-32-00018
RS901	Sleeve Increaser	1-1/8"X6"	1-3/8"X6"	0	2-1/4"	03-32-00352
	Fits all except Ford					
RS902	Sleeve Increaser	1-1/8"X6"	1-3/8"X6"	0	1-7/8"	03-32-00363
RS903	Forged Increaser	1-1/8"X6"	1-3/8"X6"	2-1/2"	4-5/8"	03-32-03531
RS904	Forged Reducer	1-3/8"X6"	1-1/8"X6"	2-3/4"	5-3/8"	03-32-00400
RS905	Forged Extender	1-3/8"X6"	1-3/8"X6"	3"	5-3/8"	03-32-00378
RS906	21 to 6 Spline	1-3/8"X21"	1-3/8"X6"	3-1/4"	5-7/8"	03-32-00373
	1000 to 540 RPM					
RS907	21 to 6 Spline QR	1-3/8"X21"	1-3/8"X6"	4-1/8"	6-3/8"	03-32-01375
	1000 to 540 RPM					
RS908	QR Extender	1-3/8"X6"	1-3/8"X6"	4-1/8"	6-3/8"	03-32-00010
RS909	21 QR Extender	1-3/8"X21"	1-3/8"X21"	4-1/8"	5-7/8"	03-32-02121
	1000 RPM					
RS910	6 to 21 Spline QR	1-3/8"X6"	1-3/8"X21"	4-1/8"	5-7/8"	03-32-00013
	1000 to 540 RPM					
RS911	20 to 6 Spline	1-3/4"X20"	1-3/8"X6"	4-5/8"	7-1/2"	03-32-00020
RS912	20 to 6 Spline	1-3/4"X20"	1-3/8"X6"	5"	7-7/8"	03-32-00076
	Heavy Duty					
RS913	20to 21 Spline	1-3/4"X20"	1-3/8"X21"	4-5/8"	7"	03-32-00021
RS914	20 to 21 Spline	1-3/4"X20"	1-3/8"X21"	5-1/2"	7-7/8"	03-32-00077
	Heavy Duty					
RS915	Over Running	1-3/8"X6"	1-3/8"X6"	3-3/4"	6-3/4"	03-31-00880
	Clutch Extender					
RS916	Over Running	1-1/8"X6"	1-3/8"X6"	3-3/4"	6-3/4"	03-31-00670
	Clutch Increaser					



RS665 RS665



RS666 RS666

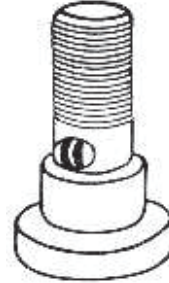


Part No. **Clevis Assembly For Check Chain**
 Fits all Ford 1964, MF 20, 30, 35, 40 & 50 thru includes Clevis, Cotter and Clevis Pin. Zinc Plated

RS666 **Muffler Clamp Assembly**
 Fits for 2M, 8M, 9M, 20 & 30.
 Replaces Ford 9M 5251, MF 181461MI Clamp

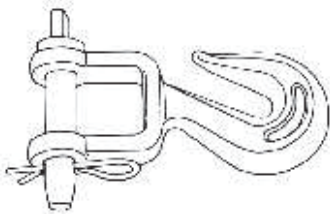
CUTTER BOLT

Part No.		Replaces
RS801	Double Staked Blade Bolt	John Deere W 2223
RS802	Blade Bolt	Bush Hog RE 7919
RS803	Blade Bolt	Tiger 6T 1022R
RS804	Blade Bolt	Terraim King 1277
RS805	Blade Bolt Side Winder	Harde C48
RS806	Blade Bolt Side Winder	15060



Made from (SAE Grades) Alloy Steel forged , hardened & Tempered

CLEVIS



Tractor Drawbar Hook

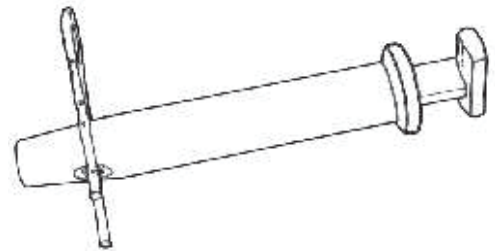
Part No RS30834 Hot Forged High Carbon Steel

Fits all tractor drawbars with 3/4" holes, up to and including 1-1/4" thick . Use with chain sizes 5/16" to 1/2", including high test chain. Pin NO. 30835 is forged and heat treated .

T-Handle Clevis Pins

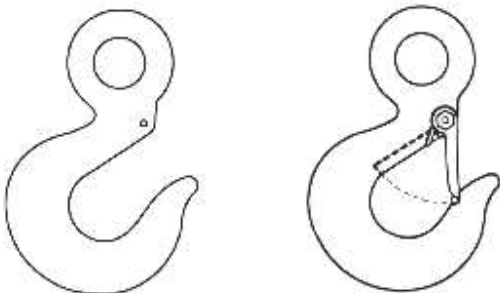
Part No.	Pin Dia	Usable Length
RS30812	1/2"	2-1/2"
RS30813	5/8"	3-1/8"
RS30814	3/4"	3-1/4"
RS30815	7/8"	3-3/4"
RS30816	1"	4-1/4"

High Carbon Steel, Drop Forged ,
Heat Treated & Zinc Plated .



Eye Hoist Hooks

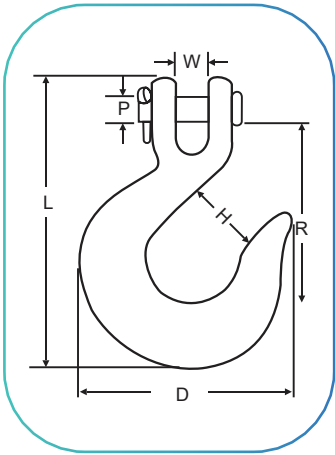
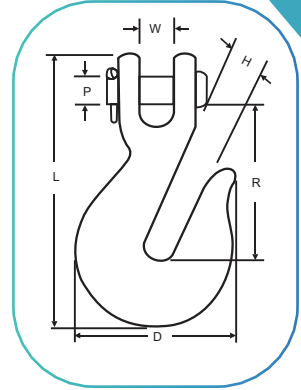
Part No.	WWL(tons)	Overall Length
RS30145	3/4"	4-5/16"
RS30146	1"	4-7/8"
RS30147	1-1/2"	5-1/2"
RS30148	2"	6-3/8"
RS30149	3"	8"
RS30150	5"	10"



High Test Grab Hook

Hot Forged, Heat Treated and Tempered

Part No.	Chain Size	Working Load Limit (LBS)	W	D	H	L	P	R
RS30804	1/4"	2,600	5/16"	1-15/16"	3/8"	3-3/8"	5/16"	2"
RS30805	5/16"	4,000	3/8"	2-1/4"	7/16"	3-15/16"	3/8"	2-3/8"
RS30806	3/8"	5,400	7/16"	2-11/16"	1/2"	4-1/2"	7/16"	2-11/16"
RS30807	7/16"	7,200	1/2"	3"	9/16"	5-1/32"	1/2"	3"
RS30808	1/2"	9,200	19/32"	3-5/16"	21/32"	5-5/8"	9/16"	3-23/64"
RS30810	5/8"	11,500	3/4"	4-1/4"	25/32"	6-7/8"	11/16"	4"
RS30812	3/4"	16,200	7/8"	5-1/4"	15/16"	8"	3/4"	4-19/32"



High Test Slip Hook

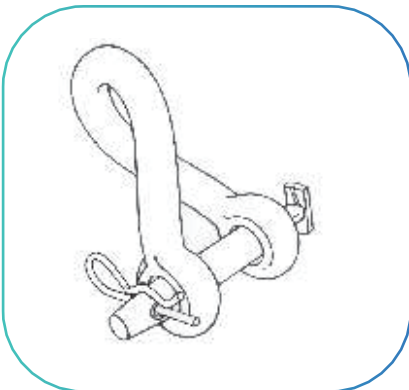
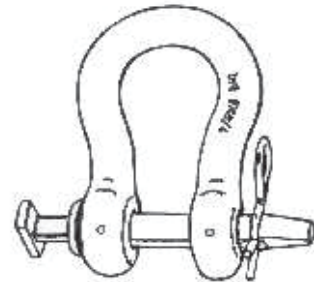
Hot Forged, Heat Treated and Tempered

Part No.	Chain Size	Working Load Limit (LBS)	W	D	H	L	P	R
RS30904	1/4"	2,600	5/16"	2-5/8"	15/16"	3-11/16"	5/16"	2-5/16"
RS30905	5/16"	4,000	3/8"	3-1/16"	1-1/16"	4-3/16"	3/8"	2-9/16"
RS30906	3/8"	5,400	7/16"	3-1/2"	1-1/4"	4-7/8"	7/16"	3"
RS30907	7/16"	7,200	1/2"	4-5/16"	1-9/16"	5-11/16"	1/2"	3-1/2"
RS30908	1/2"	9,200	19/32"	4-7/8"	1-3/4"	6-3/8"	9/16"	3-15/16"
RS30910	5/8"	11,500	3/4"	5-11/16"	2"	7-9/16"	11/16"	4-3/4"

Farm Straight Clevises

Part No.	Pin Dia	Body Size	Max. WWL(LBS)
RS30158	1/2"	5/8"X3-1/4"	-
RS30134	5/8"	3/4"X3-3/4"	12,000
RS30178	3/4"	7/8"X3-1/4"	16,000
RS30187	3/4"	7/8"X4-1/4"	16,000
RS30190	7/8"	15/16"X4-5/8"	20,000
RS30195	1"	1"X5-5/16"	-

Black Powder coated finish zinc plated Pin & clip



Farm Twisted Clevises

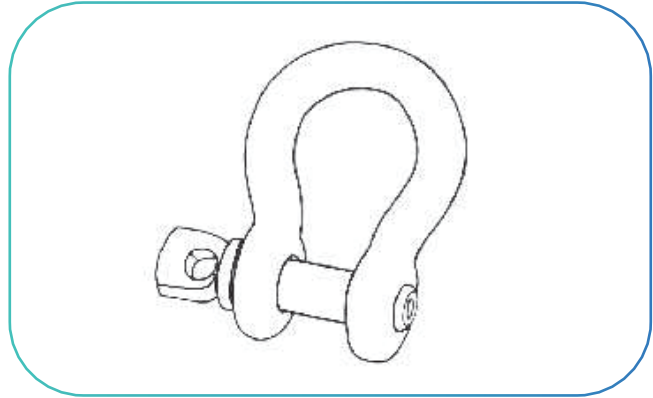
Part No.	Pin Dia	Body Size	MAX. WWL (LBS)
RS30258	1/2"	5/8"x3"	-
RS30234	5/8"	3/4"x3-1/2"	12,000
RS30278	3/4"	7/8"x3"	16,000
RS30287	3/4"	7/8"x3-7/8"	16,000
RS30290	7/8"	15/16"x4-1/4"	20,000
RS30295	1"	1"x5-5"	-

CUTTER BOLT

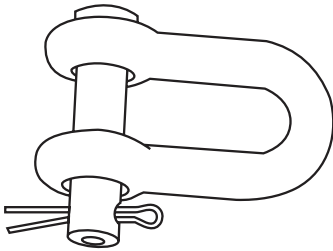
Farm Screw Pin Clevises

Part No.	Pin Dia	Pin Size
RS30646	1/4"X1-1/8"	5/16"
RS30647	5/16"X1-1/4"	3/8"
RS30648	3/8"X1-7/16"	7/16"
RS30649	7/16"X1-11/16"	1/2"
RS30650	1/2"X1-15/16"	5/8"
RS30651	5/8"X2-1/2"	3/4"
RS30652	3/4"X3"	7/8"
RS30653	7/8"X3-1/4"	1"
RS30654	1"X3-3/4"	1-1/8"

Black Powder coated finish zinc plated Pin & clip



Black Powder coated finish zinc plated P in & clip



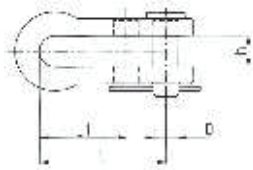
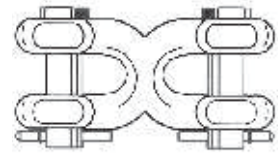
Farm Utility Clevises

Part No.	Pin Dia	Pin Size
RS30546	1/4"X7/8"	5/16"
RS30547	5/16"X1"	3/8"
RS30548	3/8"X1-1/4"	7/16"
RS30549	7/16"X1-1/2"	1/2"
RS30550	1/2"X1-11/16"	5/8"
RS30551	5/8"X2"	3/4"

Farm Double Clevises

Part No.	Chain Size	Max. WWL(LBS)
RS30605	1/4 or 5/16	4,700
RS30606	3/8	6,600
RS30608	7/16 or 1/2	11,300
RS30610	5/8"	18000

One Piece forged Steel , Heat treated Pins
Use with High test chain



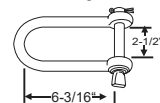
Clevis Double Hole

Part No.	D		L	L1	h
	mm	Inch			
RS30920	14	9/16"	72	50	18

General Purpose Clevis

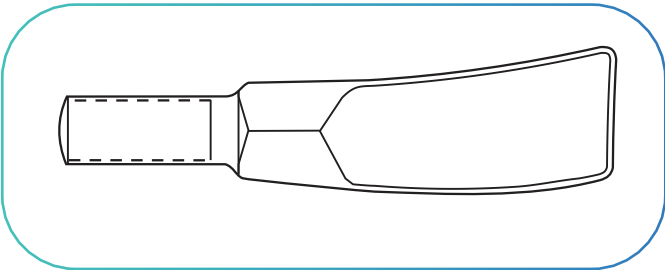
Part No. RS30465

Hot Forged - with heat treated round pin foreextra strength. 3/4" body and pin.
Working load limited 10,000 lbs. Max.



WEATHER CAPS

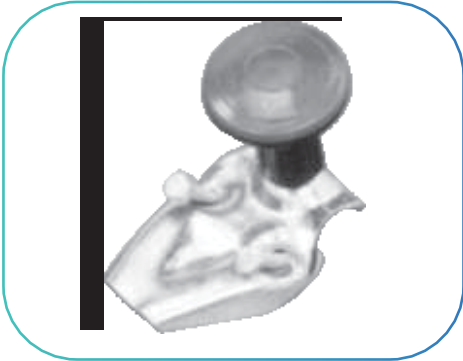
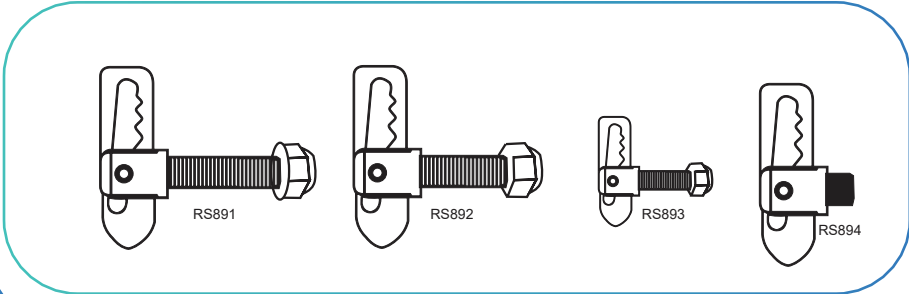
Part No.	Size	Min. Exhaust O.D.	Max. Exhaust O.D.
RS5001	1-1/2"	1-1/2"	1-11/16"
RS5002	1-3/4"	1-3/4"	1-15/16"
RS5003	2"	2"	2-3/16"
RS5004	2-1/4"	2-1/4"	2-7/16"
RS5005	2-1/2"	2-1/2"	2-11/16"
RS5006	2-3/4"	2-3/4"	2-15/16"
RS5007	3"	3"	3-3/16"
RS5008	3-1/4"	3-1/4"	3-7/16"
RS5009	3-1/2"	3-1/2"	3-11/16"
RS5010	3-3/4"	3-3/4"	3-15/16"
RS5011	4"	4"	4-3/16"
RS5012	4-1/4"	4-1/4"	4-7/16"
RS5013	4-1/2"	4-1/2"	4-11/16"
RS5014	5"	5"	5-1/4"
RS5015	57mm	50mm	-



Spike Tooth

Part No. 860d

Drop Lock Pins	
Part No.	RS891
Part No.	RS892
Part No.	RS893
Part No.	RS894



Steering Wheel Spinners

Part No.	Fig
RS2701	1
RS2702	2
RS2703	3



RS INDUSTRIES

PLOT NO-38, MAHILA UDYAMI PARK 1,
ECOTECH-III, GR. NOIDA,
G.B NAGAR, UP-201306

Tel: - +91 9810340962
+91 8130082962

www.rsindustries.global

Get in touch
inquiries@rsindustries.global